

## CD273 Monoclonal Antibody

### Description

<b>Product type</b>	Antibody
<b>Code</b>	BT-MCA4273
<b>Host</b>	Mouse
<b>Isotype</b>	Mouse IgG2a
<b>Size</b>	100µL, 50µL
<b>Immunogen</b>	Purified recombinant fragment of human CD273 (AA: 20-220) expressed in E. Coli.
<b>Mol wt</b>	31.6kDa
<b>Species reactivity</b>	Others
<b>Clonality</b>	Monoclonal
<b>Recommended application</b>	FCM
<b>Concentration</b>	N/A
<b>Full name</b>	N/A
<b>Synonyms</b>	B7DC;Btdc;PDL2;CD273;PD-L2;PDCD1L2;bA574F11.2

This product is for research use only, not for use in human, therapeutic or diagnostic procedure.

### Background

PDCD1LG2 (Programmed Cell Death 1 Ligand 2) is a Protein Coding gene. Diseases associated with PDCD1LG2 include Cysticercosis and Testicular Lymphoma. Among its related pathways are Innate Immune System and Class I MHC mediated antigen processing and presentation. An important paralog of this gene is CD274.

### Recommended Dilution

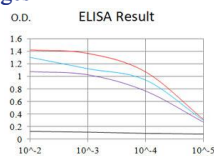
WB: 1:500 - 1:2000

FCM: 1:200 - 1:400

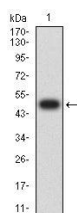
ELISA: 1:10000

Not yet tested in other applications.

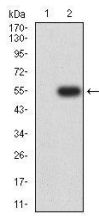
### Images



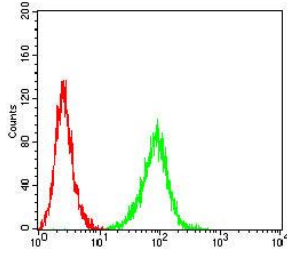
Black line: Control Antigen (100 ng);Purple line: Antigen (10ng); Blue line: Antigen (50 ng); Red line:Antigen (100 ng)



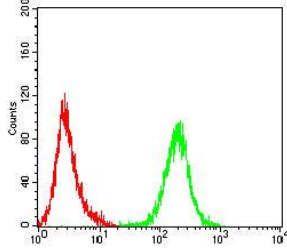
Western blot analysis using CD273 mAb against human CD273 (AA: 20-220) recombinant protein. (Expected MW is 48.6 kDa)



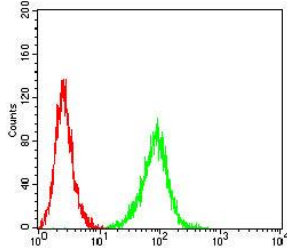
Western blot analysis using CD273 mAb against HEK293-6e (1) and CD273 (AA: 20-220)-hIgGFc transfected HEK293-6e (2) cell lysate.



Flow cytometric analysis of HeLa cells using CD273 mouse mAb (green) and negative control (red).



Flow cytometric analysis of Jurkat cells using CD273 mouse mAb (green) and negative control (red).



Flow cytometric analysis of K562 cells using CD273 mouse mAb (green) and negative control (red).

### Storage

Store at 4°C short term. Aliquot and store at -20°C long term.

501 Changsheng S Rd, Nanhu Dist, Jiaxing, Zhejiang, China

Tel: 86 21 31007137 | E-mail: [save@bt-laboratory.com](mailto:save@bt-laboratory.com) | [www.bt-laboratory.com](http://www.bt-laboratory.com)