

## ALDH1A1 Monoclonal Antibody

### Description

<b>Product type</b>	Antibody
<b>Code</b>	BT-MCA4281
<b>Host</b>	Mouse
<b>Isotype</b>	Mouse IgG1
<b>Size</b>	100µL, 50µL
<b>Immunogen</b>	Purified recombinant fragment of human ALDH1A1 (AA: 1-110) expressed in E. Coli.
<b>Mol wt</b>	54.9kDa
<b>Species reactivity</b>	Human
<b>Clonality</b>	Monoclonal
<b>Recommended application</b>	WB,IHC,FCM
<b>Concentration</b>	N/A
<b>Full name</b>	N/A
<b>Synonyms</b>	ALDC;ALDH1;HEL-9;HEL12;PUMB1;ALDH11;RALDH1;ALDH-E1;HEL-S-53e

This product is for research use only, not for use in human, therapeutic or diagnostic procedure.

### Background

N/A

### Recommended Dilution

WB: 1:500 - 1:2000

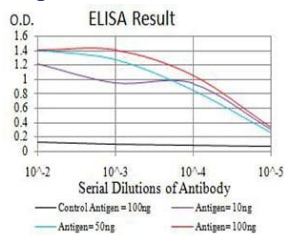
IHC-p: 1:200 - 1:1000

FCM: 1:200 - 1:400

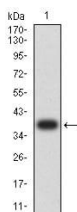
ELISA: 1:10000

Not yet tested in other applications.

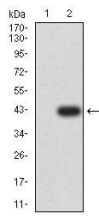
### Images



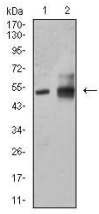
Black line: Control Antigen (100 ng);Purple line: Antigen (10ng); Blue line: Antigen (50 ng); Red line:Antigen (100 ng)



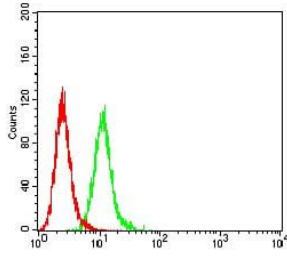
Western blot analysis using ALDH1A1 mAb against human ALDH1A1 (AA: 1-110) recombinant protein. (Expected MW is 38.4 kDa)



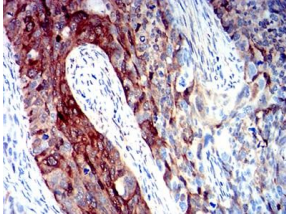
Western blot analysis using ALDH1A1 mAb against HEK293 (1) and ALDH1A1 (AA: 1-110)-hlgGfc transfected HEK293 (2) cell lysate.



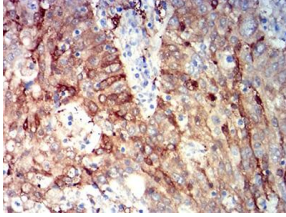
Western blot analysis using ALDH1A1 mouse mAb against HepG2 (1) and A549 (2) cell lysate.



Flow cytometric analysis of HeLa cells using ALDH1A1 mouse mAb (green) and negative control (red).



Immunohistochemical analysis of paraffin-embedded cervical cancer tissues using ALDH1A1 mouse mAb with DAB staining.



Immunohistochemical analysis of paraffin-embedded stomach cancer tissues using ALDH1A1 mouse mAb with DAB staining.

### Storage

Store at 4°C short term. Aliquot and store at -20°C long term.

501 Changsheng S Rd, Nanhu Dist, Jiaxing, Zhejiang, China

Tel: 86 21 31007137 | E-mail: [save@bt-laboratory.com](mailto:save@bt-laboratory.com) | [www.bt-laboratory.com](http://www.bt-laboratory.com)