

CHIT1 Monoclonal Antibody

Description

Product type	Antibody
Code	BT-MCA4304
Host	Mouse
Isotype	Mouse IgG1
Size	100 μ L, 50 μ L
Immunogen	Purified recombinant fragment of CHIT1 (aa22-137) expressed in E. Coli.
Mol wt	52kDa
Species reactivity	Human
Clonality	Monoclonal
Recommended application	Others
Concentration	N/A
Full name	N/A
Synonyms	Chitotriosidase;CHI3;CHIT;FLJ00314;MGC125322;CHIT1

This product is for research use only, not for use in human, therapeutic or diagnostic procedure.

Background

CHIT1:chitinase 1 (chitotriosidase). Chitotriosidase is a 50 kDa secreted glycoprotein that belongs to glycohydrolase family # 18. It is secreted by activated human macrophages and is markedly elevated in plasma of Gaucher disease patients. The expression of chitotriosidase occurs only at a late stage of differentiation of monocytes to activated macrophages in culture. Human macrophages can synthesize a functional chitotriosidase, a highly conserved enzyme with a strongly regulated expression. This enzyme may play a role in the degradation of chitin-containing pathogens.

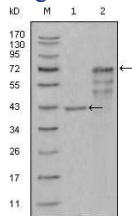
Recommended Dilution

WB: 1:500 - 1:2000

ELISA: 1:10000

Not yet tested in other applications.

Images



Western blot analysis using CHIT1 mouse mAb against truncated Trx-CHIT1 recombinant protein (1) and truncated CHIT1 (aa22-466)-hIgGfc transfected CHO-K1 cell lysate (2).

Storage

Store at 4°C short term. Aliquot and store at -20°C long term.