

## Pirh2 Monoclonal Antibody

### Description

<b>Product type</b>	Antibody
<b>Code</b>	BT-MCA4310
<b>Host</b>	Mouse
<b>Isotype</b>	Mouse IgG1
<b>Size</b>	100 $\mu$ L, 50 $\mu$ L
<b>Immunogen</b>	Purified recombinant fragment of human Pirh2 expressed in E. Coli.
<b>Mol wt</b>	30kDa; 60kDa (homodimer)
<b>Species reactivity</b>	Human,Rat
<b>Clonality</b>	Monoclonal
<b>Recommended application</b>	WB,IHC,ICC,FCM
<b>Concentration</b>	N/A
<b>Full name</b>	N/A
<b>Synonyms</b>	ARNIP;CHIMP;RNF199;RCHY1

This product is for research use only, not for use in human, therapeutic or diagnostic procedure.

### Background

Pirh 2 (P53 induced RING-H2 protein), also known as RCHY1, it forms dimers through its N- and C-terminus in cells. The Pirh2 has ubiquitin-protein ligase activity and it binds with p53 and promotes the ubiquitin-mediated proteosomal degradation of p53. The Pirh2 is oncogenic because loss of p53 function contributes directly to malignant tumor development. Pirh2 expression decreases the level of p53, and a decrease of endogenous Pirh2 expression increases p53 levels. Pirh2 is therefore considered, together with MDM2, to act as a negative regulator of p53 function.

### Recommended Dilution

WB: 1:500 - 1:2000

IHC-p: 1:200 - 1:1000

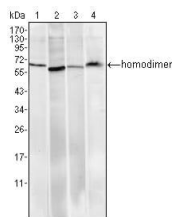
ICC: 1:200 - 1:1000

FCM: 1:200 - 1:400

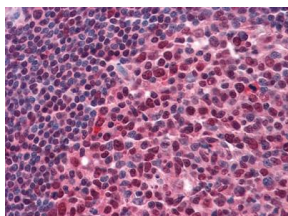
ELISA: 1:10000

Not yet tested in other applications.

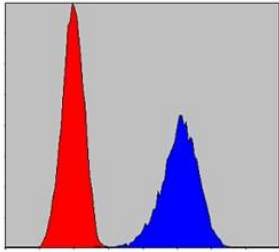
### Images



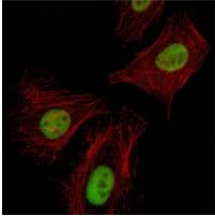
Western blot analysis using Pirh2 mouse mAb against HeLa (1), A549 (2), MCF-7 (3) and PC-12 (4) cell lysate.



Immunohistochemical analysis of paraffin-embedded human Tonsil tissues using anti-Pirh2 mouse mAb



Flow cytometric analysis of PC-12 cells using anti-Pirh2 mAb (blue) and negative control (red).



Immunofluorescence analysis of HeLa cells using Pirh2 mouse mAb (green). Red: Actin filaments have been labeled with Alexa Fluor-555 phalloidin.

### Storage

Store at 4°C short term. Aliquot and store at -20°C long term.

501 Changsheng S Rd, Nanhu Dist, Jiaxing, Zhejiang, China

Tel: 86 21 31007137 | E-mail: [save@bt-laboratory.com](mailto:save@bt-laboratory.com) | [www.bt-laboratory.com](http://www.bt-laboratory.com)