

MSI2 Monoclonal Antibody

Description

| | |
|--------------------------------|---|
| Product type | Antibody |
| Code | BT-MCA4315 |
| Host | Mouse |
| Isotype | Mouse IgG1 |
| Size | 100µL, 50µL |
| Immunogen | Purified recombinant fragment of human MSI2 (AA: 1-190) expressed in E. Coli. |
| Mol wt | 35.2kDa |
| Species reactivity | Others |
| Clonality | Monoclonal |
| Recommended application | Others |
| Concentration | N/A |
| Full name | N/A |
| Synonyms | MSI2H |

This product is for research use only, not for use in human, therapeutic or diagnostic procedure.

Background

This gene encodes an RNA-binding protein that is a member of the Musashi protein family. The encoded protein is transcriptional regulator that targets genes involved in development and cell cycle regulation. Mutations in this gene are associated with poor prognosis in certain types of cancers. This gene has also been shown to be rearranged in certain cancer cells.

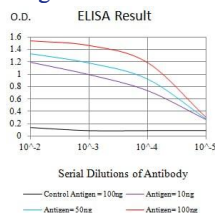
Recommended Dilution

WB: 1:500 - 1:2000

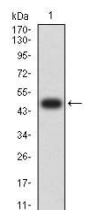
ELISA: 1:10000

Not yet tested in other applications.

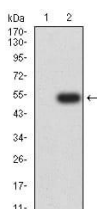
Images



Black line: Control Antigen (100 ng); Purple line: Antigen (10ng); Blue line: Antigen (50 ng); Red line: Antigen (100 ng)



Western blot analysis using MSH6 mAb against human MSH6 (AA: 217-395) recombinant protein. (Expected MW is 45.9 kDa)



Western blot analysis using MSH6 mAb against HEK293 (1) and MSH6 (AA: 217-395)-hIgGFc transfected HEK293 (2) cell lysate.

Storage

Store at 4°C short term. Aliquot and store at -20°C long term.

501 Changsheng S Rd, Nanhu Dist, Jiaxing, Zhejiang, China

Tel: 86 21 31007137 | E-mail: save@bt-laboratory.com | www.bt-laboratory.com