

HLA-DRB1 Monoclonal Antibody

Description

Product type	Antibody
Code	BT-MCA4330
Host	Mouse
Isotype	Mouse IgG1
Size	100µL, 50µL
Immunogen	Purified recombinant fragment of human HLA-DRB1 (AA: 30-266) expressed in E. Coli.
Mol wt	29.9kDa
Species reactivity	Human
Clonality	Monoclonal
Recommended application	IHC,FCM
Concentration	N/A
Full name	N/A
Synonyms	SS1;DRB1;HLA-DRB;HLA-DR1B

This product is for research use only, not for use in human, therapeutic or diagnostic procedure.

Background

HLA-DRB1 belongs to the HLA class II beta chain paralogs. The class II molecule is a heterodimer consisting of an alpha (DRA) and a beta chain (DRB), both anchored in the membrane. It plays a central role in the immune system by presenting peptides derived from extracellular proteins. Class II molecules are expressed in antigen presenting cells (APC: B lymphocytes, dendritic cells, macrophages). The beta chain is approximately 26-28 kDa. It is encoded by 6 exons. Exon one encodes the leader peptide; exons 2 and 3 encode the two extracellular domains; exon 4 encodes the transmembrane domain; and exon 5 encodes the cytoplasmic tail. Within the DR molecule the beta chain contains all the polymorphisms specifying the peptide binding specificities. Hundreds of DRB1 alleles have been described and typing for these polymorphisms is routinely done for bone marrow and kidney transplantation. DRB1 is expressed at a level five times higher than its paralogs DRB3, DRB4 and DRB5. DRB1 is present in all individuals. Allelic variants of DRB1 are linked with either none or one of the genes DRB3, DRB4 and DRB5. There are 4 related pseudogenes: DRB2, DRB6, DRB7, DRB8 and DRB9.

Recommended Dilution

WB: 1:500 - 1:2000

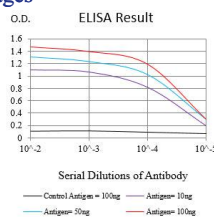
IHC-p: 1:200 - 1:1000

FCM: 1:200 - 1:400

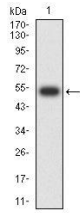
ELISA: 1:10000

Not yet tested in other applications.

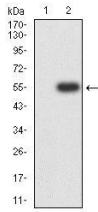
Images



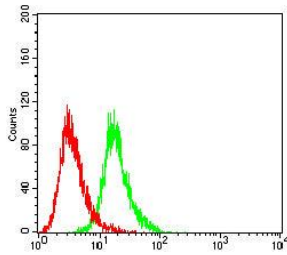
Black line: Control Antigen (100 ng);Purple line: Antigen (10ng); Blue line: Antigen (50 ng); Red line:Antigen (100 ng)



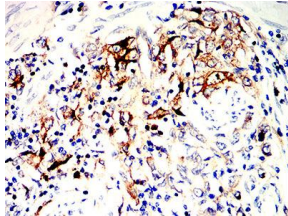
Western blot analysis using HLA-DRB1 mAb against human HLA-DRB1 (AA: 30-266) recombinant protein. (Expected MW is 53.7 kDa)



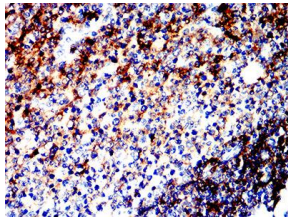
Western blot analysis using HLA-DRB1 mAb against HEK293-6e (1) and HLA-DRB1 (AA: 30-266)-hIgGFc transfected HEK293-6e (2) cell lysate.



Flow cytometric analysis of Raji cells using HLA-DRB1 mouse mAb (green) and negative control (red).



Immunohistochemical analysis of paraffin-embedded human stomach cancer tissue using HLA-DRB1 mouse mAb with DAB staining.



Immunohistochemical analysis of paraffin-embedded human tonsil tissue using HLA-DRB1 mouse mAb with DAB staining.

Storage

Store at 4°C short term. Aliquot and store at -20°C long term.

501 Changsheng S Rd, Nanhu Dist, Jiaxing, Zhejiang, China

Tel: 86 21 31007137 | E-mail: save@bt-laboratory.com | www.bt-laboratory.com