

AKT1 Monoclonal Antibody

Description

Product type	Antibody
Code	BT-MCA4333
Host	Mouse
Isotype	Mouse IgG1
Size	100µL, 50µL
Immunogen	Purified recombinant fragment of human AKT1 (AA: 1-150) expressed in E. Coli.
Mol wt	55.7kDa
Species reactivity	Human,Monkey,Rat
Clonality	Monoclonal
Recommended application	WB,IHC,FCM
Concentration	N/A
Full name	N/A
Synonyms	AKT;PKB;RAC;CWS6;PRKBA;PKB-ALPHA;RAC-ALPHA

This product is for research use only, not for use in human, therapeutic or diagnostic procedure.

Background

N/A

Recommended Dilution

WB: 1:500 - 1:2000

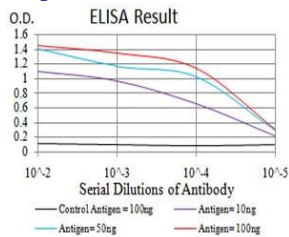
IHC-p: 1:200 - 1:1000

FCM: 1:200 - 1:400

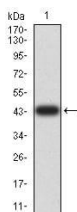
ELISA: 1:10000

Not yet tested in other applications.

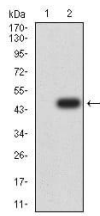
Images



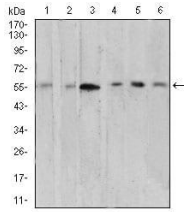
Black line: Control Antigen (100 ng);Purple line: Antigen (10ng); Blue line: Antigen (50 ng); Red line:Antigen (100 ng)



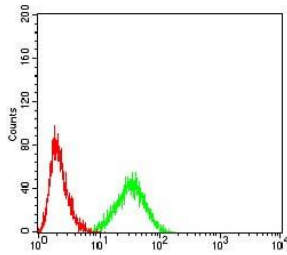
Western blot analysis using AKT1 mAb against human AKT1 (AA: 1-150) recombinant protein. (Expected MW is 43.6 kDa)



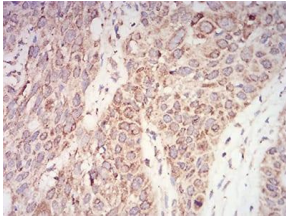
Western blot analysis using AKT1 mAb against HEK293 (1) and AKT1 (AA: 1-150)-hIgGFc transfected HEK293 (2) cell lysate.



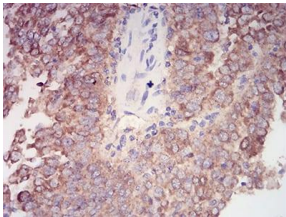
Western blot analysis using AKT1 mouse mAb against A549 (1), MCF-7 (2), HeLa (3), COS7 (4), C6 (5), and HL-60 (6) cell lysate.



Flow cytometric analysis of HeLa cells using AKT1 mouse mAb (green) and negative control (red).



Immunohistochemical analysis of paraffin-embedded esophageal cancer tissues using AKT1 mouse mAb with DAB staining.



Immunohistochemical analysis of paraffin-embedded endometrial cancer tissues using AKT1 mouse mAb with DAB staining.

Storage

Store at 4°C short term. Aliquot and store at -20°C long term.

501 Changsheng S Rd, Nanhu Dist, Jiaxing, Zhejiang, China

Tel: 86 21 31007137 | E-mail: save@bt-laboratory.com | www.bt-laboratory.com