

## IRF3 Monoclonal Antibody

### Description

<b>Product type</b>	Antibody
<b>Code</b>	BT-MCA4335
<b>Host</b>	Mouse
<b>Isotype</b>	Mouse IgG1
<b>Size</b>	100µL, 50µL
<b>Immunogen</b>	Purified recombinant fragment of human IRF3 (AA: 1-150) expressed in HEK293-6e cells supernatant.
<b>Mol wt</b>	47.2kDa
<b>Species reactivity</b>	Human,Mouse,Rat
<b>Clonality</b>	Monoclonal
<b>Recommended application</b>	WB,IHC,FCM
<b>Concentration</b>	N/A
<b>Full name</b>	N/A
<b>Synonyms</b>	IIAE7

This product is for research use only, not for use in human, therapeutic or diagnostic procedure.

### Background

This gene encodes a member of the interferon regulatory transcription factor (IRF) family. The encoded protein is found in an inactive cytoplasmic form that upon serine/threonine phosphorylation forms a complex with CREBBP. This complex translocates to the nucleus and activates the transcription of interferons alpha and beta, as well as other interferon-induced genes. The protein plays an important role in the innate immune response against DNA and RNA viruses. Mutations in this gene are associated with Encephalopathy, acute, infection-induced, herpes-specific, 7.

### Recommended Dilution

WB: 1:500 - 1:2000

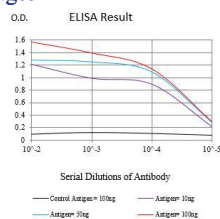
IHC-p: 1:200 - 1:1000

FCM: 1:200 - 1:400

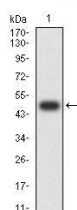
ELISA: 1:10000

Not yet tested in other applications.

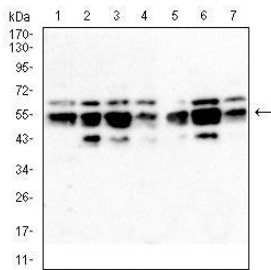
### Images



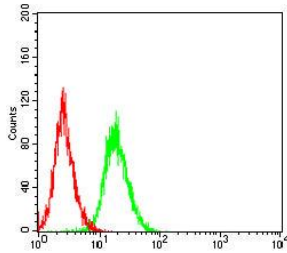
Black line: Control Antigen (100 ng);Purple line: Antigen (10ng); Blue line: Antigen (50 ng); Red line:Antigen (100 ng)



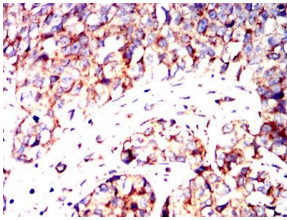
Western blot analysis using IRF3 mAb against human IRF3 (AA: 1-150) recombinant protein. (Expected MW is 47.4 kDa)



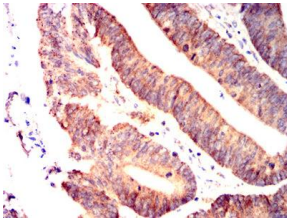
Western blot analysis using IRF3 mouse mAb against THP-1 (1), HeLa (2), A549 (3), MCF-7 (4), K562 (5), Jurkat (6) and A431 (7) cell lysate.



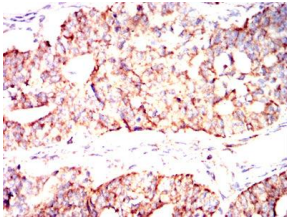
Flow cytometric analysis of HeLa cells using IRF3 mouse mAb (green) and negative control (red).



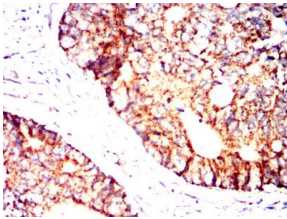
Immunohistochemical analysis of paraffin-embedded human bladder cancer tissues using IRF3 mouse mAb with DAB staining.



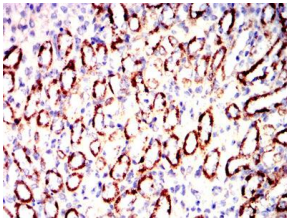
Immunohistochemical analysis of paraffin-embedded human colon cancer tissues using IRF3 mouse mAb with DAB staining.



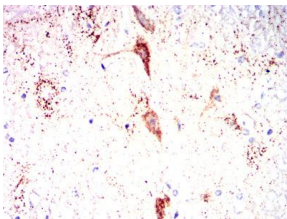
Immunohistochemical analysis of paraffin-embedded human ovarian cancer tissues using IRF3 mouse mAb with DAB staining.



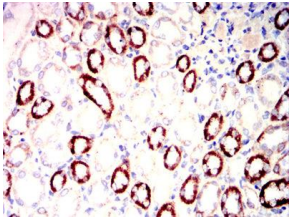
Immunohistochemical analysis of paraffin-embedded human rectum cancer tissues using IRF3 mouse mAb with DAB staining.



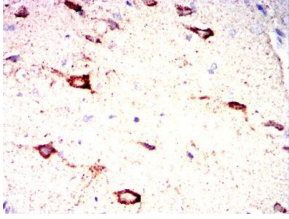
Immunohistochemical analysis of paraffin-embedded mouse kidney tissues using IRF3 mouse mAb with DAB staining.



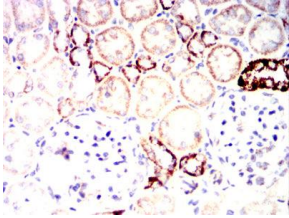
Immunohistochemical analysis of paraffin-embedded mouse brain tissues using IRF3 mouse mAb with DAB staining.



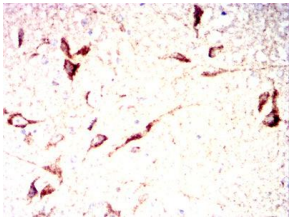
Immunohistochemical analysis of paraffin-embedded rat kidney tissues using IRF3 mouse mAb with DAB staining.



Immunohistochemical analysis of paraffin-embedded rat brain tissues using IRF3 mouse mAb with DAB staining.



Immunohistochemical analysis of paraffin-embedded rabbit kidney tissues using IRF3 mouse mAb with DAB staining.



Immunohistochemical analysis of paraffin-embedded rabbit brain tissues using IRF3 mouse mAb with DAB staining.

#### Storage

Store at 4°C short term. Aliquot and store at -20°C long term.

501 Changsheng S Rd, Nanhu Dist, Jiaxing, Zhejiang, China

Tel: 86 21 31007137 | E-mail: [save@bt-laboratory.com](mailto:save@bt-laboratory.com) | [www.bt-laboratory.com](http://www.bt-laboratory.com)