

## ESR1 Monoclonal Antibody

### Description

<b>Product type</b>	Antibody
<b>Code</b>	BT-MCA4339
<b>Host</b>	Mouse
<b>Isotype</b>	Mouse IgG1
<b>Size</b>	100µL, 50µL
<b>Immunogen</b>	Purified recombinant fragment of human ESR1 (AA: 2-185) expressed in E. Coli.
<b>Mol wt</b>	66.2kDa
<b>Species reactivity</b>	Human
<b>Clonality</b>	Monoclonal
<b>Recommended application</b>	WB,IHC,ICC,FCM
<b>Concentration</b>	N/A
<b>Full name</b>	N/A
<b>Synonyms</b>	ER;ESR;Era;ESRA;ESTRR;NR3A1

This product is for research use only, not for use in human, therapeutic or diagnostic procedure.

### Background

N/A

### Recommended Dilution

WB: 1:500 - 1:2000

IHC-p: 1:200 - 1:1000

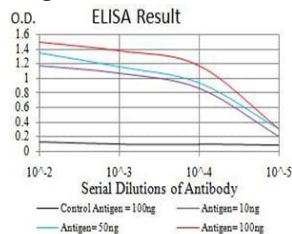
ICC: 1:200 - 1:1000

FCM: 1:200 - 1:400

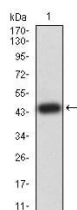
ELISA: 1:10000

Not yet tested in other applications.

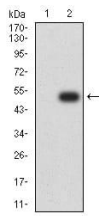
### Images



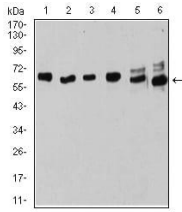
Black line: Control Antigen (100 ng);Purple line: Antigen (10ng); Blue line: Antigen (50 ng); Red line:Antigen (100 ng)



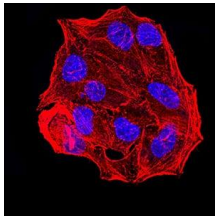
Western blot analysis using ESR1 mAb against human ESR1 (AA: 2-185) recombinant protein.  
(Expected MW is 45.8 kDa)



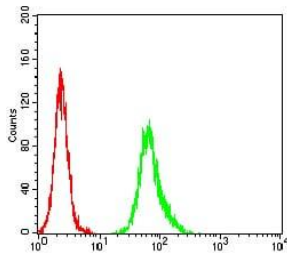
Western blot analysis using ESR1 mAb against HEK293 (1) and ESR1 (AA: 2-185)-hIgGFc transfected HEK293 (2) cell lysate.



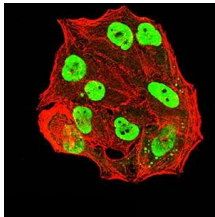
Western blot analysis using ESR1 mouse mAb against MOLT4 (1), Raji (2), MCF-7 (3), T47D (4), SK-Br-3 (5), and HeLa (6) cell lysate.



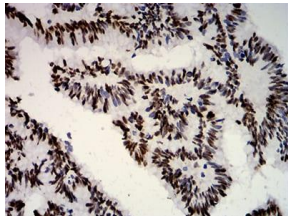
Immunofluorescence analysis of HeLa cells using ESR1 mouse mAb. Blue: DRAQ5 fluorescent DNA dye. Red: Actin filaments have been labeled with Alexa Fluor- 555 phalloidin.



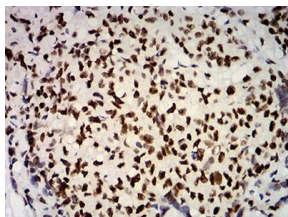
Flow cytometric analysis of HeLa cells using ESR1 mouse mAb (green) and negative control (red).



Immunofluorescence analysis of HeLa cells using ESR1 mouse mAb (green). Blue: DRAQ5 fluorescent DNA dye. Red: Actin filaments have been labeled with Alexa Fluor- 555 phalloidin. Secondary antibody from Fisher (Cat#: 35503)



Immunohistochemical analysis of paraffin-embedded colon cancer tissues using ESR1 mouse mAb with DAB staining.



Immunohistochemical analysis of paraffin-embedded breast cancer tissues using ESR1 mouse mAb with DAB staining.

## Storage

Store at 4°C short term. Aliquot and store at -20°C long term.

501 Changsheng S Rd, Nanhu Dist, Jiaxing, Zhejiang, China

Tel: 86 21 31007137 | E-mail: [save@bt-laboratory.com](mailto:save@bt-laboratory.com) | [www.bt-laboratory.com](http://www.bt-laboratory.com)