

ATP2A1 Monoclonal Antibody

Description

Product type	Antibody
Code	BT-MCA4349
Host	Mouse
Isotype	Mouse IgG1
Size	100μL, 50μL
Immunogen	Purified recombinant fragment of human ATP2A1 (AA: 487-631) expressed in E. Coli.
Mol wt	110kDa
Species reactivity	Human,Mouse,Monkey
Clonality	Monoclonal
Recommended application	WB,FCM
Concentration	N/A
Full name	N/A
Synonyms	ATP2A;SERCA1

This product is for research use only, not for use in human, therapeutic or diagnostic procedure.

Background

N/A

Recommended Dilution

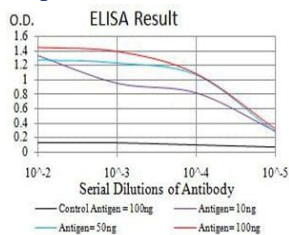
WB: 1:500 - 1:2000

FCM: 1:200 - 1:400

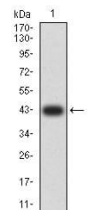
ELISA: 1:10000

Not yet tested in other applications.

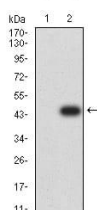
Images



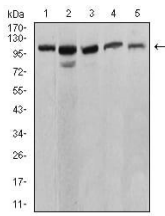
Black line: Control Antigen (100 ng);Purple line: Antigen (10ng); Blue line: Antigen (50 ng); Red line:Antigen (100 ng)



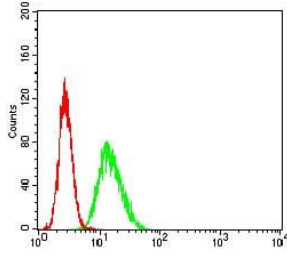
Western blot analysis using ATP2A1 mAb against human ATP2A1 (AA: 487-631) recombinant protein. (Expected MW is 42 kDa)



Western blot analysis using ATP2A1 mAb against HEK293 (1) and ATP2A1 (AA: 487-631)-hIgGfc transfected HEK293 (2) cell lysate.



Western blot analysis using ATP2A1 mouse mAb against C2C12 (1), COS7 (2), HeLa (3), K562 (4), and Jurkat (5) cell lysate.



Flow cytometric analysis of HeLa cells using ATP2A1 mouse mAb (green) and negative control (red).

Storage

Store at 4°C short term. Aliquot and store at -20°C long term.

501 Changsheng S Rd, Nanhu Dist, Jiaxing, Zhejiang, China

Tel: 86 21 31007137 | E-mail: save@bt-laboratory.com | www.bt-laboratory.com