

## RPS6KA2 Monoclonal Antibody

### Description

<b>Product type</b>	Antibody
<b>Code</b>	BT-MCA4350
<b>Host</b>	Mouse
<b>Isotype</b>	Mouse IgG1
<b>Size</b>	100 $\mu$ L, 50 $\mu$ L
<b>Immunogen</b>	Purified recombinant fragment of human RPS6KA2 (AA: 415-734) expressed in E. Coli.
<b>Mol wt</b>	83.2kDa
<b>Species reactivity</b>	Human,Mouse
<b>Clonality</b>	Monoclonal
<b>Recommended application</b>	WB,IHC,ICC,FCM
<b>Concentration</b>	N/A
<b>Full name</b>	N/A
<b>Synonyms</b>	RSK;HU-2;RSK3;p90-RSK3;pp90RSK3;MAPKAPK1C;S6K-alpha;S6K-alpha2

This product is for research use only, not for use in human, therapeutic or diagnostic procedure.

### Background

This gene encodes a member of the RSK (ribosomal S6 kinase) family of serine/threonine kinases. This kinase contains 2 non-identical kinase catalytic domains and phosphorylates various substrates, including members of the mitogen-activated kinase (MAPK) signalling pathway. The activity of this protein has been implicated in controlling cell growth and differentiation. Alternate transcriptional splice variants, encoding different isoforms, have been characterized.

### Recommended Dilution

WB: 1:500 - 1:2000

IHC-p: 1:200 - 1:1000

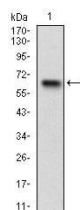
ICC: 1:200 - 1:1000

FCM: 1:200 - 1:400

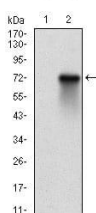
ELISA: 1:10000

Not yet tested in other applications.

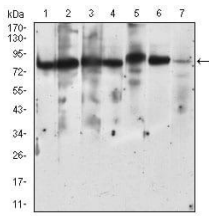
### Images



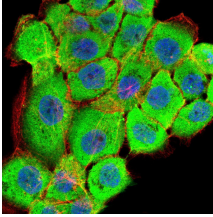
Western blot analysis using RPS6KA2 mAb against human RPS6KA2 (AA: 415-734) recombinant protein. (Expected MW is 62 kDa)



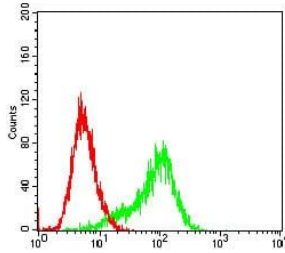
Western blot analysis using RPS6KA2 mAb against HEK293 (1) and RPS6KA2 (AA: 415-734)-hIgGfc transfected HEK293 (2) cell lysate.



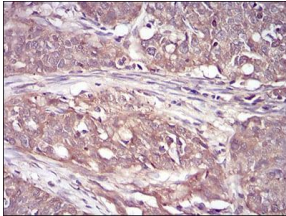
Western blot analysis using RPS6KA2 mouse mAb against HeLa (1), A431 (2), HEK293 (3), Jurkat (4), HepG2 (5), MCF-7 (6), NIH/3T3 (7) cell lysate.



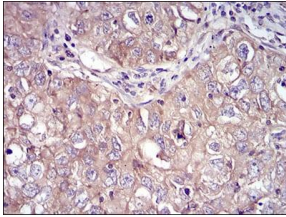
Immunofluorescence analysis of A431 cells using RPS6KA2 mouse mAb (green). Blue: DRAQ5 fluorescent DNA dye. Red: Actin filaments have been labeled with Alexa Fluor- 555 phalloidin. Secondary antibody from Fisher (Cat#: 35503)



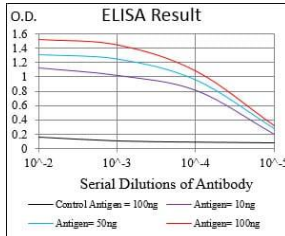
Flow cytometric analysis of HeLa cells using RPS6KA2 mouse mAb (green) and negative control (red).



Immunohistochemical analysis of paraffin-embedded cervical cancer tissues using RPS6KA2 mouse mAb with DAB staining.



Immunohistochemical analysis of paraffin-embedded lung cancer tissues using RPS6KA2 mouse mAb with DAB staining.



Black line: Control Antigen (100 ng); Purple line: Antigen(10ng); Blue line: Antigen (50 ng); Red line: Antigen (100 ng);

## Storage

Store at 4°C short term. Aliquot and store at -20°C long term.

501 Changsheng S Rd, Nanhu Dist, Jiaxing, Zhejiang, China

Tel: 86 21 31007137 | E-mail: [save@bt-laboratory.com](mailto:save@bt-laboratory.com) | [www.bt-laboratory.com](http://www.bt-laboratory.com)