

IRAK4 Monoclonal Antibody

Description

Product type	Antibody
Code	BT-MCA4351
Host	Mouse
Isotype	Mouse IgG1
Size	100µL, 50µL
Immunogen	Purified recombinant fragment of human IRAK4 expressed in E. Coli.
Mol wt	52kDa
Species reactivity	Human,Mouse,Monkey
Clonality	Monoclonal
Recommended application	WB,IHC,FCM
Concentration	N/A
Full name	N/A
Synonyms	IPD1;REN64;NY-REN-64

This product is for research use only, not for use in human, therapeutic or diagnostic procedure.

Background

This gene encodes a kinase that activates NF-kappaB in both the Toll-like receptor (TLR) and T-cell receptor (TCR) signaling pathways. The protein is essential for most innate immune responses. Mutations in this gene result in IRAK4 deficiency and recurrent invasive pneumococcal disease. Multiple transcript variants encoding different isoforms have been found for this gene.

Recommended Dilution

WB: 1:500 - 1:2000

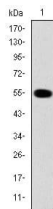
IHC-p: 1:200 - 1:1000

FCM: 1:200 - 1:400

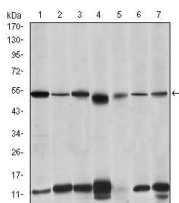
ELISA: 1:10000

Not yet tested in other applications.

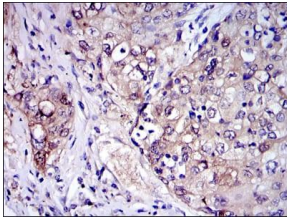
Images



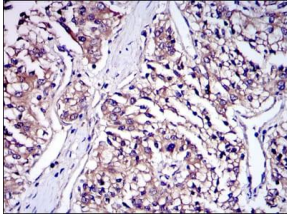
Western blot analysis using IRAK4 mAb against human IRAK4 (AA: 21-198) recombinant protein.
(Expected MW is 45.4 kDa)



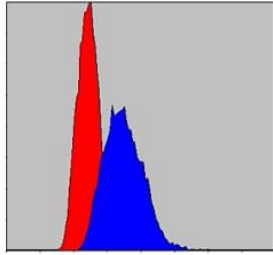
Western blot analysis using IRAK4 mouse mAb against THP-1 (1), HeLa (2), K562 (3), MCF-7 (4), RAW264.7 (5), Jurkat (6) and Cos7 (7) cell lysate.



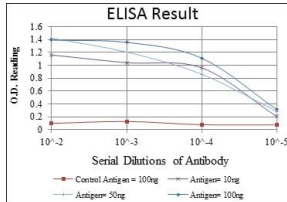
Immunohistochemical analysis of paraffin-embedded human lung cancer tissues using IRAK4 mouse mAb with DAB staining.



Immunohistochemical analysis of paraffin-embedded human kidney cancer tissues using IRAK4 mouse mAb with DAB staining.



Flow cytometric analysis of HeLa cells using IRAK4 mouse mAb (blue) and negative control (red).



Red: Control Antigen (100ng); Purple: Antigen (10ng); Green: Antigen (50ng); Blue: Antigen (100ng);

Storage

Store at 4°C short term. Aliquot and store at -20°C long term.

501 Changsheng S Rd, Nanhu Dist, Jiaxing, Zhejiang, China

Tel: 86 21 31007137 | E-mail: save@bt-laboratory.com | www.bt-laboratory.com