

## CSF1R Monoclonal Antibody

### Description

<b>Product type</b>	Antibody
<b>Code</b>	BT-MCA4368
<b>Host</b>	Mouse
<b>Isotype</b>	Mouse IgG2b
<b>Size</b>	100µL, 50µL
<b>Immunogen</b>	Purified recombinant fragment of human CSF1R (AA: 344-497) expressed in E. Coli.
<b>Mol wt</b>	108kDa
<b>Species reactivity</b>	Human
<b>Clonality</b>	Monoclonal
<b>Recommended application</b>	IHC,ICC
<b>Concentration</b>	N/A
<b>Full name</b>	N/A
<b>Synonyms</b>	FMS;CSFR;FIM2;HDLS;C-FMS;CD115;CSF-1R;M-CSF-R

This product is for research use only, not for use in human, therapeutic or diagnostic procedure.

### Background

N/A

### Recommended Dilution

WB: 1:500 - 1:2000

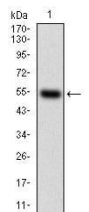
IHC-p: 1:200 - 1:1000

ICC: 1:200 - 1:1000

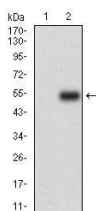
ELISA: 1:10000

Not yet tested in other applications.

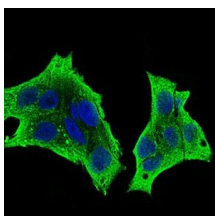
### Images



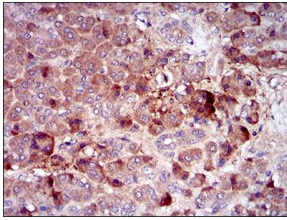
Western blot analysis using CSF1R mAb against human CSF1R (AA: 344-497) recombinant protein.  
(Expected MW is 43.3 kDa)



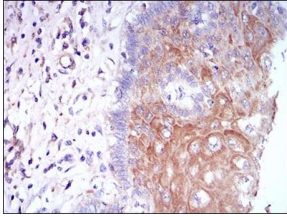
Western blot analysis using CSF1R mAb against HEK293 (1) and CSF1R (AA: 344-497)-hlgGFc transfected HEK293 (2) cell lysate.



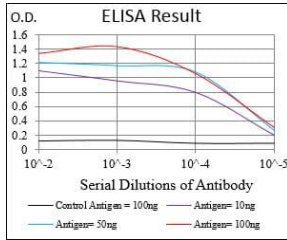
Immunofluorescence analysis of HepG2 cells using CSF1R mouse mAb (green). Blue: DRAQ5 fluorescent DNA dye. Secondary antibody from Fisher (Cat#: 35503)



Immunohistochemical analysis of paraffin-embedded pancreas tissues using CSF1R mouse mAb with DAB staining.



Immunohistochemical analysis of paraffin-embedded esophageal tissues using CSF1R mouse mAb with DAB staining.



Black line: Control Antigen (100 ng); Purple line: Antigen(10ng); Blue line: Antigen (50 ng); Red line: Antigen (100 ng);

### Storage

Store at 4°C short term. Aliquot and store at -20°C long term.

501 Changsheng S Rd, Nanhu Dist, Jiaxing, Zhejiang, China

Tel: 86 21 31007137 | E-mail: [save@bt-laboratory.com](mailto:save@bt-laboratory.com) | [www.bt-laboratory.com](http://www.bt-laboratory.com)