

MAP1LC3A Monoclonal Antibody

Description

Product type	Antibody
Code	BT-MCA4372
Host	Mouse
Isotype	Mouse IgG1
Size	100µL, 50µL
Immunogen	Purified recombinant fragment of human MAP1LC3A (AA: 1-121) expressed in E. Coli.
Mol wt	14.3kDa
Species reactivity	Human
Clonality	Monoclonal
Recommended application	IHC,FCM
Concentration	N/A
Full name	N/A
Synonyms	LC3;LC3A;ATG8E;MAP1ALC3;MAP1BLC3

This product is for research use only, not for use in human, therapeutic or diagnostic procedure.

Background

N/A

Recommended Dilution

WB: 1:500 - 1:2000

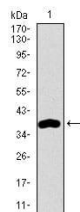
IHC-p: 1:200 - 1:1000

FCM: 1:200 - 1:400

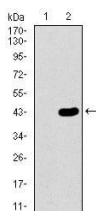
ELISA: 1:10000

Not yet tested in other applications.

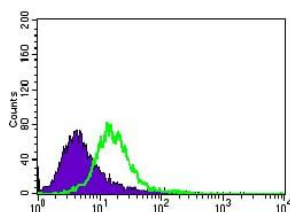
Images



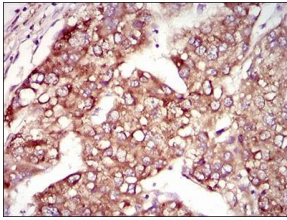
Western blot analysis using MAP1LC3A mAb against human MAP1LC3A recombinant protein.
(Expected MW is 39.8 kDa)



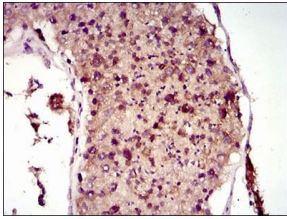
Western blot analysis using MAP1LC3A mAb against HEK293 (1) and MAP1LC3A (AA: 1-121)-hlgGfC transfected HEK293 (2) cell lysate.



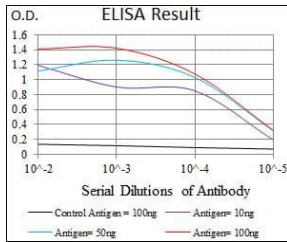
Flow cytometric analysis of HeLa cells using MAP1LC3A mouse mAb (green) and negative control (purple).



Immunohistochemical analysis of paraffin-embedded liver cancer tissues using MAP1LC3A mouse mAb with DAB staining.



Immunohistochemical analysis of paraffin-embedded testis tissues using MAP1LC3A mouse mAb with DAB staining.



Black line: Control Antigen (100 ng); Purple line: Antigen(10ng); Blue line: Antigen (50 ng); Red line: Antigen (100 ng);

Storage

Store at 4°C short term. Aliquot and store at -20°C long term.

501 Changsheng S Rd, Nanhu Dist, Jiaxing, Zhejiang, China

Tel: 86 21 31007137 | E-mail: save@bt-laboratory.com | www.bt-laboratory.com