

NEFH Monoclonal Antibody

Description

Product type	Antibody
Code	BT-MCA4389
Host	Mouse
Isotype	Mouse IgG1
Size	100μL, 50μL
Immunogen	Purified recombinant fragment of human NEFH (AA: 2-251) expressed in E. Coli.
Mol wt	112.4kDa
Species reactivity	Others
Clonality	Monoclonal
Recommended application	IHC,FCM
Concentration	N/A
Full name	N/A
Synonyms	NFH;CMT2CC

This product is for research use only, not for use in human, therapeutic or diagnostic procedure.

Background

Neurofilaments are type IV intermediate filament heteropolymers composed of light, medium, and heavy chains. Neurofilaments comprise the axoskeleton and functionally maintain neuronal caliber. They may also play a role in intracellular transport to axons and dendrites. This gene encodes the heavy neurofilament protein. This protein is commonly used as a biomarker of neuronal damage and susceptibility to amyotrophic lateral sclerosis (ALS) has been associated with mutations in this gene.

Recommended Dilution

WB: 1:500 - 1:2000

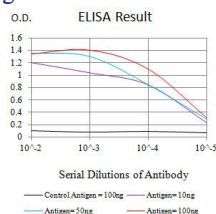
IHC-p: 1:200-1:1000

FCM: 1:200-1:400

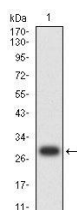
ELISA: 1:10000

Not yet tested in other applications.

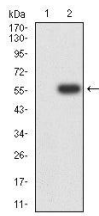
Images



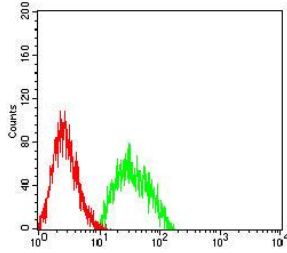
Black line: Control Antigen (100 ng);Purple line: Antigen (10ng); Blue line: Antigen (50 ng); Red line: Antigen (100 ng)



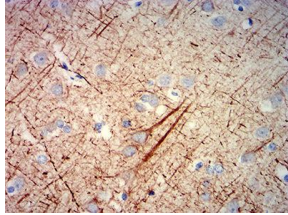
Western blot analysis using NEFH mAb against human NEFH (AA: 2-251) recombinant protein. (Expected MW is 29.6 kDa)



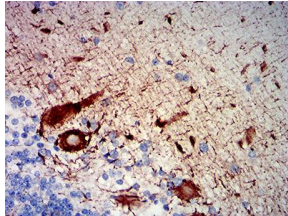
Western blot analysis using NEFH mAb against HEK293-6e (1) and NEFH (AA: 2-251)-hIgGfc transfected HEK293-6e (2) cell lysate.



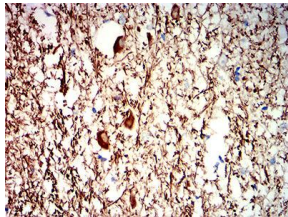
Flow cytometric analysis of SK-N-SH cells using NEFH mouse mAb (green) and negative control (red).



Immunohistochemical analysis of paraffin-embedded human cerebrum tissues using NEFH mouse mAb with DAB staining.



Immunohistochemical analysis of paraffin-embedded human cerebellum tissues using NEFH mouse mAb with DAB staining.



Immunohistochemical analysis of paraffin-embedded human medulla oblongata tissues using NEFH mouse mAb with DAB staining.

Storage

Store at 4°C short term. Aliquot and store at -20°C long term.

501 Changsheng S Rd, Nanhu Dist, Jiaxing, Zhejiang, China

Tel: 86 21 31007137 | E-mail: save@bt-laboratory.com | www.bt-laboratory.com