

CER1 Monoclonal Antibody

Description

Product type	Antibody
Code	BT-MCA4392
Host	Mouse
Isotype	Mouse IgG1
Size	100 μ L, 50 μ L
Immunogen	Purified recombinant fragment of human CER1 expressed in E. Coli.
Mol wt	30kDa
Species reactivity	Human
Clonality	Monoclonal
Recommended application	IHC
Concentration	N/A
Full name	N/A
Synonyms	DAND4

This product is for research use only, not for use in human, therapeutic or diagnostic procedure.

Background

CER1: cerberus 1, cysteine knot superfamily, homolog (*Xenopus laevis*). It is a cytokine member of the cysteine knot superfamily, characterized by nine conserved cysteines and a cysteine knot region. The cerberus-related cytokines, together with Dan and DRM/Gremlin, represent a group of bone morphogenetic protein (BMP) antagonists that can bind directly to BMPs and inhibit their activity.

Recommended Dilution

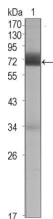
WB: 1:500 - 1:2000

IHC-p: 1:200 - 1:1000

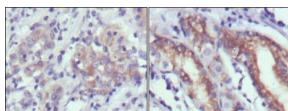
ELISA: 1:10000

Not yet tested in other applications.

Images



Western blot analysis using CER1 mouse mAb against CER1 (aa18-267)-hIgGFc transfected HEK293 cell lysate (1).



Immunohistochemical analysis of paraffin-embedded human gastric cancer (left) and normal gastric tissues (right) using CER1 mouse mAb with DAB staining.

Storage

Store at 4°C short term. Aliquot and store at -20°C long term.