

CD367 Monoclonal Antibody

Description

Product type	Antibody
Code	BT-MCA4394
Host	Mouse
Isotype	Mouse IgG2a
Size	100µL, 50µL
Immunogen	Purified recombinant fragment of human CD367 (AA: extra 70-237) expressed in E. Coli.
Mol wt	27.5kDa
Species reactivity	Human
Clonality	Monoclonal
Recommended application	FCM
Concentration	N/A
Full name	N/A
Synonyms	CLEC4A;DCIR;LLIR;DDB27;CLECSF6;HDCGC13P

This product is for research use only, not for use in human, therapeutic or diagnostic procedure.

Background

This gene encodes a member of the C-type lectin/C-type lectin-like domain (CTL/CTLD) superfamily. Members of this family share a common protein fold and have diverse functions, such as cell adhesion, cell-cell signalling, glycoprotein turnover, and roles in inflammation and immune response. The encoded type 2 transmembrane protein may play a role in inflammatory and immune response. Multiple transcript variants encoding distinct isoforms have been identified for this gene. This gene is closely linked to other CTL/CTLD superfamily members on chromosome 12p13 in the natural killer gene complex region.

Recommended Dilution

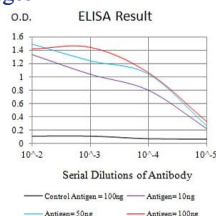
WB: 1:500 - 1:2000

FCM: 1:200 - 1:400

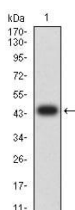
ELISA: 1:10000

Not yet tested in other applications.

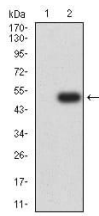
Images



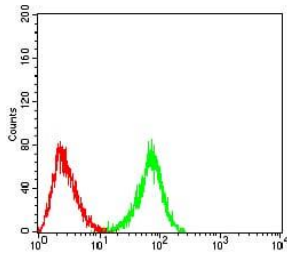
Black line: Control Antigen (100 ng);Purple line: Antigen (10ng); Blue line: Antigen (50 ng); Red line:Antigen (100 ng)



Western blot analysis using CD367 mAb against human CD367 (AA: extra 70-237) recombinant protein. (Expected MW is 45.8 kDa)



Western blot analysis using CD367 mAb against HEK293 (1) and CD367 (AA: extra 70-237)-hlgGFc transfected HEK293 (2) cell lysate.



Flow cytometric analysis of HL-60 cells using CD367 mouse mAb (green) and negative control (red).

Storage

Store at 4°C short term. Aliquot and store at -20°C long term.

501 Changsheng S Rd, Nanhu Dist, Jiaxing, Zhejiang, China

Tel: 86 21 31007137 | E-mail: save@bt-laboratory.com | www.bt-laboratory.com