

MSH6 Monoclonal Antibody

Description

Product type	Antibody
Code	BT-MCA4404
Host	Mouse
Isotype	Mouse IgG2b
Size	100µL, 50µL
Immunogen	Purified recombinant fragment of human MSH6 (AA: 374-540) expressed in E. Coli.
Mol wt	152.8kDa
Species reactivity	Others
Clonality	Monoclonal
Recommended application	WB,IHC,ICC,FCM
Concentration	N/A
Full name	N/A
Synonyms	GTBP;HSAP;p160;GTMBP;HNPCC5

This product is for research use only, not for use in human, therapeutic or diagnostic procedure.

Background

This gene encodes a member of the DNA mismatch repair MutS family. In E. coli, the MutS protein helps in the recognition of mismatched nucleotides prior to their repair. A highly conserved region of approximately 150 aa, called the Walker-A adenine nucleotide binding motif, exists in MutS homologs. The encoded protein heterodimerizes with MSH2 to form a mismatch recognition complex that functions as a bidirectional molecular switch that exchanges ADP and ATP as DNA mismatches are bound and dissociated. Mutations in this gene may be associated with hereditary nonpolyposis colon cancer, colorectal cancer, and endometrial cancer. Transcripts variants encoding different isoforms have been described.

Recommended Dilution

WB: 1:500 - 1:2000

IHC-p: 1:200 - 1:1000

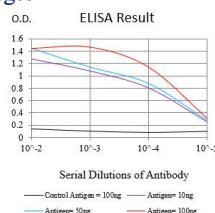
ICC: 1:200 - 1:1000

FCM: 1:200 - 1:400

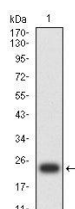
ELISA: 1:10000

Not yet tested in other applications.

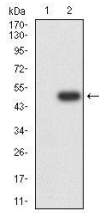
Images



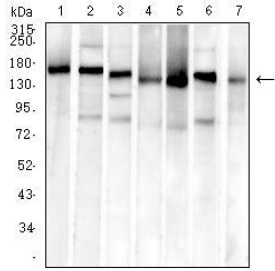
Black line: Control Antigen (100 ng); Purple line: Antigen (10ng); Blue line: Antigen (50 ng); Red line: Antigen (100 ng)



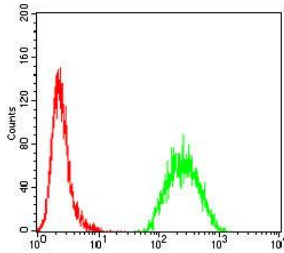
Western blot analysis using MSH6 mAb against human MSH6 (AA: 374-540) recombinant protein. (Expected MW is 22.6 kDa)



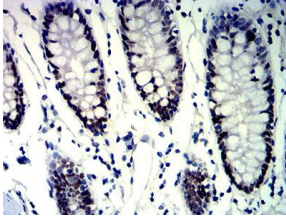
Western blot analysis using MSH6 mAb against HEK293-6e (1) and MSH6 (AA: 374-540)-hIgGFc transfected HEK293-6e (2) cell lysate.



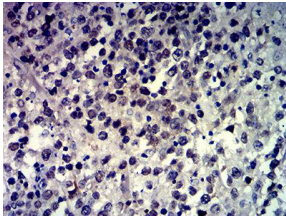
Western blot analysis using MSH6 mouse mAb against SH-SY5Y (1), HeLa (2), PC-3 (3), HCT116 (4), HEK293 (5), A549 (6), and HepG2 (7) cell lysate.



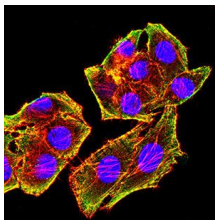
Flow cytometric analysis of HeLa cells using MSH6 mouse mAb (green) and negative control (red).



Immunohistochemical analysis of paraffin-embedded colon tissues using MSH6 mouse mAb with DAB staining.



Immunohistochemical analysis of paraffin-embedded brain tumor tissues using MSH6 mouse mAb with DAB staining.



Immunofluorescence analysis of HeLa cells using MSH6 mouse mAb (green). Blue: DRAQ5 fluorescent DNA dye. Red: Actin filaments have been labeled with Alexa Fluor- 555 phalloidin. Secondary antibody from Fisher (Cat#: 35503)

Storage

Store at 4°C short term. Aliquot and store at -20°C long term.

501 Changsheng S Rd, Nanhu Dist, Jiaxing, Zhejiang, China

Tel: 86 21 31007137 | E-mail: save@bt-laboratory.com | www.bt-laboratory.com