

CHRM3 Monoclonal Antibody

Description

Product type	Antibody
Code	BT-MCA4412
Host	Mouse
Isotype	Mouse IgG1
Size	100µL, 50µL
Immunogen	Purified recombinant fragment of human CHRM3 (AA: extra mix) expressed in E. Coli.
Mol wt	66kDa
Species reactivity	Human
Clonality	Monoclonal
Recommended application	FCM
Concentration	N/A
Full name	N/A
Synonyms	HM3;PBS;EGBRS

This product is for research use only, not for use in human, therapeutic or diagnostic procedure.

Background

The muscarinic cholinergic receptors belong to a larger family of G protein-coupled receptors. The functional diversity of these receptors is defined by the binding of acetylcholine and includes cellular responses such as adenylate cyclase inhibition, phosphoinositide degeneration, and potassium channel mediation. Muscarinic receptors influence many effects of acetylcholine in the central and peripheral nervous system. The muscarinic cholinergic receptor 3 controls smooth muscle contraction and its stimulation causes secretion of glandular tissue. Alternative promoter use and alternative splicing results in multiple transcript variants that have different tissue specificities.

Recommended Dilution

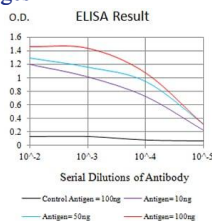
WB: 1:500 - 1:2000

FCM: 1:200 - 1:400

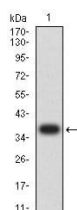
ELISA: 1:10000

Not yet tested in other applications.

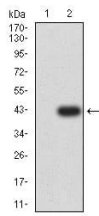
Images



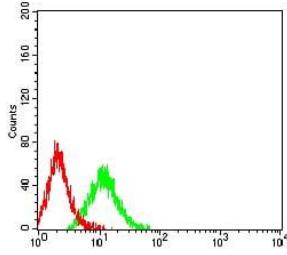
Black line: Control Antigen (100 ng);Purple line: Antigen (10ng); Blue line: Antigen (50 ng); Red line:Antigen (100 ng)



Western blot analysis using CHRM3 mAb against human CHRM3 (AA: extra mix) recombinant protein. (Expected MW is 37.9 kDa)



Western blot analysis using CHRM3 mAb against HEK293 (1) and CHRM3 (AA: extra mix)-hIgGFc transfected HEK293 (2) cell lysate.



Flow cytometric analysis of Jurkat cells using CHRM3 mouse mAb (green) and negative control (red).

Storage

Store at 4°C short term. Aliquot and store at -20°C long term.

501 Changsheng S Rd, Nanhu Dist, Jiaxing, Zhejiang, China

Tel: 86 21 31007137 | E-mail: save@bt-laboratory.com | www.bt-laboratory.com