

KRT14 Monoclonal Antibody

Description

Product type	Antibody
Code	BT-MCA4413
Host	Mouse
Isotype	Mouse IgG1
Size	100µL, 50µL
Immunogen	Purified recombinant fragment of human KRT14 (AA: 115-472) expressed in E. Coli.
Mol wt	51.5kDa
Species reactivity	Human,Monkey
Clonality	Monoclonal
Recommended application	WB,IHC,ICC,FCM
Concentration	N/A
Full name	N/A
Synonyms	K14;NFJ;CK14;EBS3;EBS4

This product is for research use only, not for use in human, therapeutic or diagnostic procedure.

Background

This gene encodes a member of the keratin family, the most diverse group of intermediate filaments. This gene product, a type I keratin, is usually found as a heterotetramer with two keratin 5 molecules, a type II keratin. Together they form the cytoskeleton of epithelial cells. Mutations in the genes for these keratins are associated with epidermolysis bullosa simplex. At least one pseudogene has been identified at 17p12-p11.

Recommended Dilution

WB: 1:500 - 1:2000

IHC-p: 1:200 - 1:1000

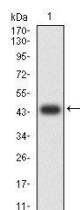
ICC: 1:200 - 1:1000

FCM: 1:200 - 1:400

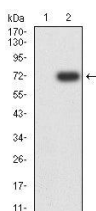
ELISA: 1:10000

Not yet tested in other applications.

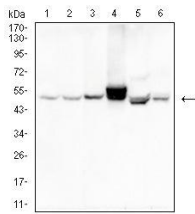
Images



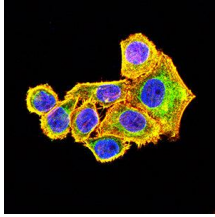
Western blot analysis using KRT14 mAb against human KRT14 (AA: 115-472) recombinant protein.
(Expected MW is 43.9 kDa)



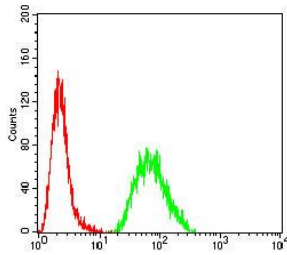
Western blot analysis using KRT14 mAb against HEK293-6e (1) and KRT14 (AA: 115-472)-hIgGfc transfected HEK293-6e (2) cell lysate.



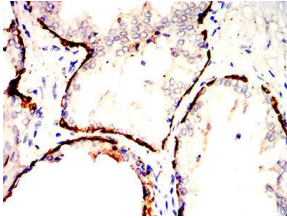
Western blot analysis using KRT14 mouse mAb against MCF-7 (1), HeLa (2), A431 (3), SW480 (4), T47D (5) and Molt-4 (6) cell lysate.



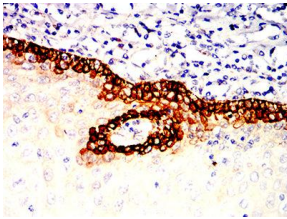
Immunofluorescence analysis of HeLa cells using KRT14 mouse mAb (green). Blue: DRAQ5 fluorescent DNA dye. Red: Actin filaments have been labeled with Alexa Fluor- 555 phalloidin. Secondary antibody from Fisher (Cat#: 35503)



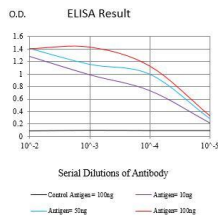
Flow cytometric analysis of HeLa cells using KRT14 mouse mAb (green) and negative control (red).



Immunohistochemical analysis of paraffin-embedded prostatic cancer tissues using KRT14 mouse mAb with DAB staining.



Immunohistochemical analysis of paraffin-embedded esophagus tissues using KRT14 mouse mAb with DAB staining.



Black line: Control Antigen (100 ng);Purple line: Antigen (10ng); Blue line: Antigen (50 ng); Red line:Antigen (100 ng)

Storage

Store at 4°C short term. Aliquot and store at -20°C long term.

501 Changsheng S Rd, Nanhu Dist, Jiaxing, Zhejiang, China

Tel: 86 21 31007137 | E-mail: save@bt-laboratory.com | www.bt-laboratory.com