

CD338 Monoclonal Antibody

Description

Product type	Antibody
Code	BT-MCA4425
Host	Mouse
Isotype	Mouse IgG2b
Size	100µL, 50µL
Immunogen	Purified recombinant fragment of human CD338 (AA: extra mix) expressed in E. Coli.
Mol wt	75kDa
Species reactivity	Others
Clonality	Monoclonal
Recommended application	WB,IHC,ICC,FCM
Concentration	N/A
Full name	N/A
Synonyms	MRX;MXR;ABCP;BCRP;BMDP;MXR1;ABC15;BCRP1;ABCG2;GOUT1;MXR-1;CDw338;UAQTL1;EST157481

This product is for research use only, not for use in human, therapeutic or diagnostic procedure.

Background

The membrane-associated protein encoded by this gene is included in the superfamily of ATP-binding cassette (ABC) transporters. ABC proteins transport various molecules across extra- and intra-cellular membranes. ABC genes are divided into seven distinct subfamilies (ABC1, MDR/TAP, MRP, ALD, OABP, GCN20, White). This protein is a member of the White subfamily. Alternatively referred to as a breast cancer resistance protein, this protein functions as a xenobiotic transporter which may play a major role in multi-drug resistance. It likely serves as a cellular defense mechanism in response to mitoxantrone and anthracycline exposure. Significant expression of this protein has been observed in the placenta, which may suggest a potential role for this molecule in placenta tissue. Multiple transcript variants encoding different isoforms have been found for this gene.

Recommended Dilution

WB: 1:500 - 1:2000

IHC-p: 1:200 - 1:1000

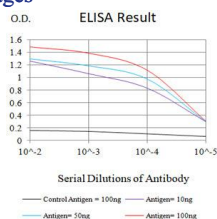
ICC: 1:200 - 1:1000

FCM: 1:200 - 1:400

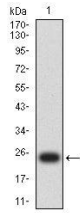
ELISA: 1:10000

Not yet tested in other applications.

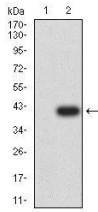
Images



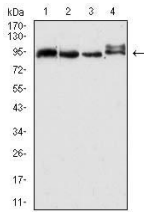
Black line: Control Antigen (100 ng);Purple line: Antigen (10ng); Blue line: Antigen (50 ng); Red line:Antigen (100 ng)



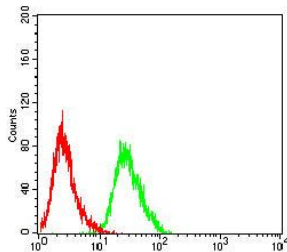
Western blot analysis using CD338 mAb against human CD338 (AA: extra mix) recombinant protein. (Expected MW is 24.2 kDa)



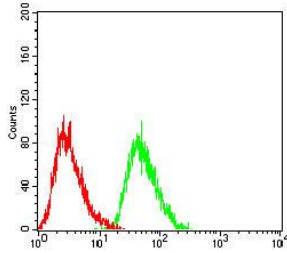
Western blot analysis using CD338 mAb against HEK293-6e (1) and CD338 (AA: extra mix)-hlgGFc transfected HEK293-6e (2) cell lysate.



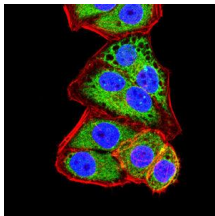
Western blot analysis using CD338 mouse mAb against A549 (1), HePG2 (2), HeLa (3), and NIH/3T3 (4) cell lysate.



Flow cytometric analysis of HeLa cells using CD338 mouse mAb (green) and negative control (red).



Flow cytometric analysis of HePG2 cells using CD338 mouse mAb (green) and negative control (red).



Immunofluorescence analysis of HeLa cells using CD338 mouse mAb (green). Blue: DRAQ5 fluorescent DNA dye. Red: Actin filaments have been labeled with Alexa Fluor- 555 phalloidin. Secondary antibody from Fisher (Cat#: 35503)

Storage

Store at 4°C short term. Aliquot and store at -20°C long term.