

PPP2CB Monoclonal Antibody

Description

Product type	Antibody
Code	BT-MCA4441
Host	Mouse
Isotype	Mouse IgG1
Size	100µL, 50µL
Immunogen	Purified recombinant fragment of human PPP2CB expressed in E. Coli.
Mol wt	35.5kDa
Species reactivity	Human
Clonality	Monoclonal
Recommended application	WB,IHC,FCM
Concentration	N/A
Full name	N/A
Synonyms	PP2CB;PP2Abeta

This product is for research use only, not for use in human, therapeutic or diagnostic procedure.

Background

N/A

Recommended Dilution

WB: 1:500 - 1:2000

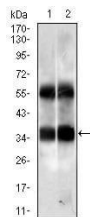
IHC-p: 1:200 - 1:1000

FCM: 1:200 - 1:400

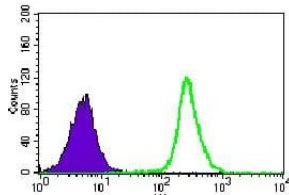
ELISA: 1:10000

Not yet tested in other applications.

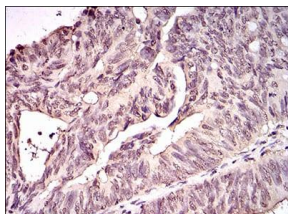
Images



Western blot analysis using PPP2CB mouse mAb against HUVE-12 (1) and K562 (2) cell lysate.



Flow cytometric analysis of K562 cells using PPP2CB mouse mAb (green) and negative control (purple).



Immunohistochemical analysis of paraffin-embedded rectum cancer tissues using PPP2CB mouse mAb with DAB staining.



Red: Control Antigen (100ng); Purple: Antigen (10ng); Green: Antigen (50ng); Blue: Antigen (100ng);

Storage

Store at 4°C short term. Aliquot and store at -20°C long term.

501 Changsheng S Rd, Nanhu Dist, Jiaxing, Zhejiang, China

Tel: 86 21 31007137 | E-mail: save@bt-laboratory.com | www.bt-laboratory.com