

SIGLEC8 Monoclonal Antibody

Description

Product type	Antibody
Code	BT-MCA4447
Host	Mouse
Isotype	Mouse IgG2b
Size	100µL, 50µL
Immunogen	Purified recombinant fragment of human SIGLEC8 (AA: extra 17-216) expressed in E. Coli.
Mol wt	54kDa
Species reactivity	Others
Clonality	Monoclonal
Recommended application	WB,IHC,FCM
Concentration	N/A
Full name	N/A
Synonyms	SAF2;SIGLEC-8;SIGLEC8L

This product is for research use only, not for use in human, therapeutic or diagnostic procedure.

Background

Sialic acid-binding immunoglobulin (Ig)-like lectins, or SIGLECs (e.g., CD33 (MIM 159590)), are a family of type 1 transmembrane proteins each having a unique expression pattern, mostly in hemopoietic cells. SIGLEC8 is a member of the CD33-like subgroup of SIGLECs, which are localized to 19q13.3-q13.4 and have 2 conserved cytoplasmic tyrosine-based motifs: an immunoreceptor tyrosine-based inhibitory motif, or ITIM (see MIM 604964), and a motif homologous to one identified in signaling lymphocyte activation molecule (SLAM; MIM 603492) that mediates an association with SLAM-associated protein (SAP; MIM 300490) (summarized by Foussias et al., 2000 [PubMed 11095983])

Recommended Dilution

WB: 1:500 - 1:2000

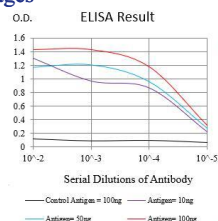
IHC-p: 1:200 - 1:1000

FCM: 1:200 - 1:400

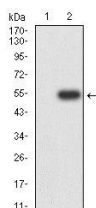
ELISA: 1:10000

Not yet tested in other applications.

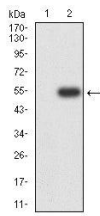
Images



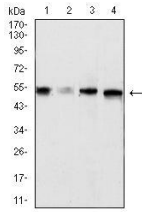
Black line: Control Antigen (100 ng);Purple line: Antigen (10ng); Blue line: Antigen (50 ng); Red line:Antigen (100 ng)



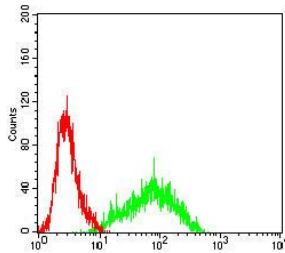
Western blot analysis using SIGLEC8 mAb against human SIGLEC8 (AA: extra 17-216) recombinant protein. (Expected MW is 25.3 kDa)



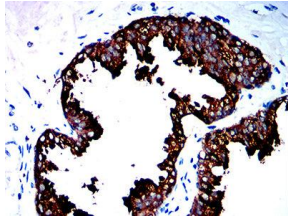
Western blot analysis using SIGLEC8 mAb against HEK293-6e (1) and SIGLEC8 (AA: extra 17-216)-hIgGFc transfected HEK293-6e (2) cell lysate.



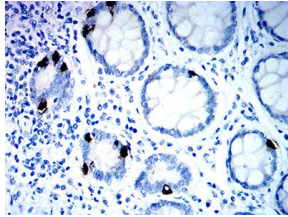
Western blot analysis using SIGLEC8 mouse mAb against mouse Liver (1), rat Liver (2) tissues lysate, MCF-7 (3), and HT-29 (4) cell lysate.



Flow cytometric analysis of Jurkat cells using SIGLEC8 mouse mAb (green) and negative control (red).



Immunohistochemical analysis of paraffin-embedded prostate cancer tissues using SIGLEC8 mouse mAb with DAB staining.



Immunohistochemical analysis of paraffin-embedded rectum tissues using SIGLEC8 mouse mAb with DAB staining.

Storage

Store at 4°C short term. Aliquot and store at -20°C long term.

501 Changsheng S Rd, Nanhu Dist, Jiaxing, Zhejiang, China

Tel: 86 21 31007137 | E-mail: save@bt-laboratory.com | www.bt-laboratory.com