

GUCY1A3 Monoclonal Antibody

Description

Product type	Antibody
Code	BT-MCA4455
Host	Mouse
Isotype	Mouse IgG1
Size	100 μ L, 50 μ L
Immunogen	Purified recombinant fragment of human GUCY1A3 (AA: 22-214) expressed in E. Coli.
Mol wt	77.5kDa
Species reactivity	Human
Clonality	Monoclonal
Recommended application	WB,IHC,ICC,FCM
Concentration	N/A
Full name	N/A
Synonyms	GUCA3;GC-SA3;GUC1A3;GUCSA3;GUCY1A1

This product is for research use only, not for use in human, therapeutic or diagnostic procedure.

Background

N/A

Recommended Dilution

WB: 1:500 - 1:2000

IHC-p: 1:200 - 1:1000

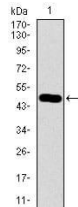
ICC: 1:200 - 1:1000

FCM: 1:200 - 1:400

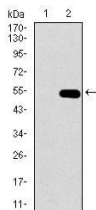
ELISA: 1:10000

Not yet tested in other applications.

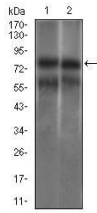
Images



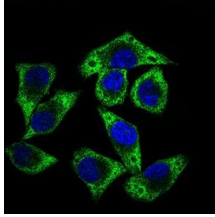
Western blot analysis using GUCY1A3 mAb against human GUCY1A3 recombinant protein.
(Expected MW is 47.2 kDa)



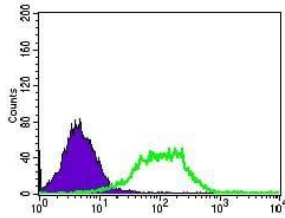
Western blot analysis using GUCY1A3 mAb against HEK293 (1) and GUCY1A3 (AA: 22-214)-hIgGFc transfected HEK293 (2) cell lysate.



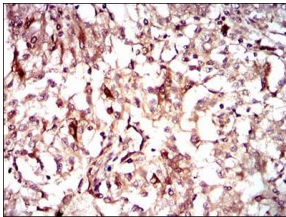
Western blot analysis using GUCY1A3 mouse mAb against HEK293 (1) and Jurkat (2) cell lysate.



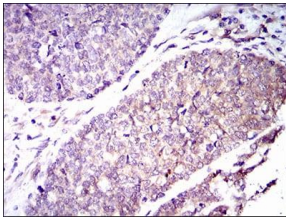
Immunofluorescence analysis of HepG2 cells using GUCY1A3 mouse mAb (green). Blue: DRAQ5 fluorescent DNA dye.



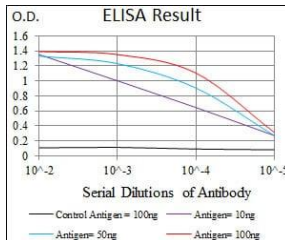
Flow cytometric analysis of HEK293 cells using GUCY1A3 mouse mAb (green) and negative control (purple).



Immunohistochemical analysis of paraffin-embedded renal cancer tissues using GUCY1A3 mouse mAb with DAB staining.



Immunohistochemical analysis of paraffin-embedded esophageal cancer tissues using GUCY1A3 mouse mAb with DAB staining.



Black line: Control Antigen (100 ng); Purple line: Antigen(10ng); Blue line: Antigen (50 ng); Red line: Antigen (100 ng);

Storage

Store at 4°C short term. Aliquot and store at -20°C long term.

501 Changsheng S Rd, Nanhui Dist, Jiaying, Zhejiang, China

Tel: 86 21 31007137 | E-mail: save@bt-laboratory.com | www.bt-laboratory.com