

SPP1 Monoclonal Antibody

Description

Product type	Antibody
Code	BT-MCA4458
Host	Mouse
Isotype	Mouse IgG1
Size	100 μ L, 50 μ L
Immunogen	Purified recombinant fragment of human SPP1 (AA: 167-314) expressed in E. Coli.
Mol wt	35.4kDa
Species reactivity	Human
Clonality	Monoclonal
Recommended application	IHC,ICC
Concentration	N/A
Full name	N/A
Synonyms	OPN;BNSP;BSPI;ETA-1

This product is for research use only, not for use in human, therapeutic or diagnostic procedure.

Background

N/A

Recommended Dilution

WB: 1:500 - 1:2000

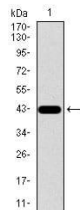
IHC-p: 1:200 - 1:1000

ICC: 1:200 - 1:1000

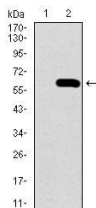
ELISA: 1:10000

Not yet tested in other applications.

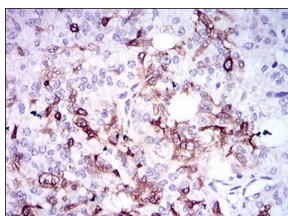
Images



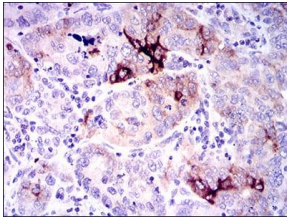
Western blot analysis using SPP1 mAb against human SPP1 recombinant protein. (Expected MW is 42.6 kDa)



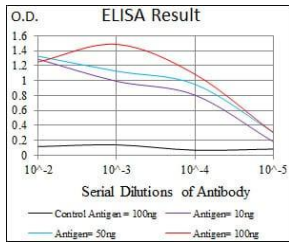
Western blot analysis using SPP1 mAb against HEK293 (1) and SPP1 (AA: 167-314)-hIgGFc transfected HEK293 (2) cell lysate.



Immunohistochemical analysis of paraffin-embedded prostate cancer tissues using SPP1 mouse mAb with DAB staining.



Immunohistochemical analysis of paraffin-embedded endometrial cancer tissues using SPP1 mouse mAb with DAB staining.



Black line: Control Antigen (100 ng); Purple line: Antigen(10ng); Blue line: Antigen (50 ng); Red line: Antigen (100 ng);

Storage

Store at 4°C short term. Aliquot and store at -20°C long term.

501 Changsheng S Rd, Nanhu Dist, Jiaxing, Zhejiang, China

Tel: 86 21 31007137 | E-mail: save@bt-laboratory.com | www.bt-laboratory.com