

MAP2K5 Monoclonal Antibody

Description

Product type	Antibody
Code	BT-MCA4461
Host	Mouse
Isotype	Mouse IgG1
Size	100µL, 50µL
Immunogen	Purified recombinant fragment of human MAP2K5 (AA: 63-180) expressed in E. Coli.
Mol wt	50kDa
Species reactivity	Human
Clonality	Monoclonal
Recommended application	WB,IHC,FCM
Concentration	N/A
Full name	N/A
Synonyms	MEK5;MAPKK5;PRKMK5;HsT17454

This product is for research use only, not for use in human, therapeutic or diagnostic procedure.

Background

The protein encoded by this gene is a dual specificity protein kinase that belongs to the MAP kinase kinase family. This kinase specifically interacts with and activates MAPK7/ERK5. This kinase itself can be phosphorylated and activated by MAP3K3/MEKK3, as well as by atypical protein kinase C isoforms (aPKCs). The signal cascade mediated by this kinase is involved in growth factor stimulated cell proliferation and muscle cell differentiation. Three alternatively spliced transcript variants of this gene encoding distinct isoforms have been described.

Recommended Dilution

WB: 1:500 - 1:2000

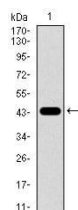
IHC-p: 1:200 - 1:1000

FCM: 1:200 - 1:400

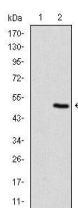
ELISA: 1:10000

Not yet tested in other applications.

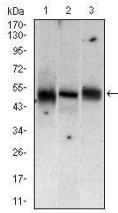
Images



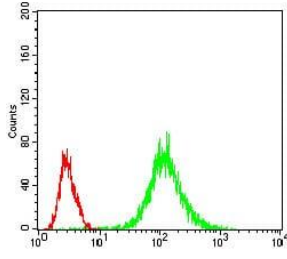
Western blot analysis using MAP2K5 mAb against human MAP2K5 (AA: 63-180) recombinant protein. (Expected MW is 39 kDa)



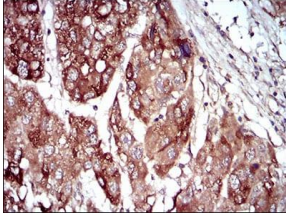
Western blot analysis using MAP2K5 mAb against HEK293 (1) and MAP2K5 (AA: 63-180)-hIgGfc transfected HEK293 (2) cell lysate.



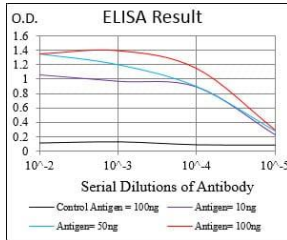
Western blot analysis using MAP2K5 mouse mAb against Jurkat (1), A431 (2), A549 (3) cell lysate.



Flow cytometric analysis of Jurkat cells using MAP2K5 mouse mAb (green) and negative control (red).



Immunohistochemical analysis of paraffin-embedded liver cancer tissues using MAP2K5 mouse mAb with DAB staining.



Black line: Control Antigen (100 ng); Purple line: Antigen(10ng); Blue line: Antigen (50 ng); Red line: Antigen (100 ng);

Storage

Store at 4°C short term. Aliquot and store at -20°C long term.

501 Changsheng S Rd, Nanhu Dist, Jiaxing, Zhejiang, China

Tel: 86 21 31007137 | E-mail: save@bt-laboratory.com | www.bt-laboratory.com