

## RALB Monoclonal Antibody

### Description

|                                |  |
|--------------------------------|--|
| <b>Product type</b>            | Antibody   |
| <b>Code</b>                    | BT-MCA4462   |
| <b>Host</b>                    | Mouse  |
| <b>Isotype</b>                 | Mouse IgG2a  |
| <b>Size</b>                    | 100µL, 50µL  |
| <b>Immunogen</b>               | Purified recombinant fragment of human RALB (AA: 89-206) expressed in E. Coli. |
| <b>Mol wt</b>                  | 23.4kDa  |
| <b>Species reactivity</b>      | Human  |
| <b>Clonality</b>               | Monoclonal   |
| <b>Recommended application</b> | WB,FCM   |
| <b>Concentration</b>           | N/A  |
| <b>Full name</b>               | N/A  |
| <b>Synonyms</b>                | N  |

This product is for research use only, not for use in human, therapeutic or diagnostic procedure.

### Background

N/A

### Recommended Dilution

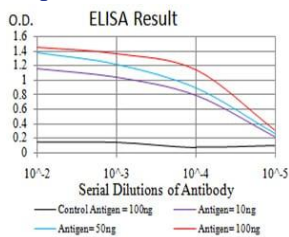
WB: 1:500 - 1:2000

FCM: 1:200 - 1:400

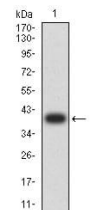
ELISA: 1:10000

Not yet tested in other applications.

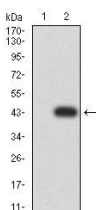
### Images



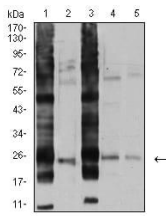
Black line: Control Antigen (100 ng);Purple line: Antigen (10ng); Blue line: Antigen (50 ng); Red line:Antigen (100 ng)



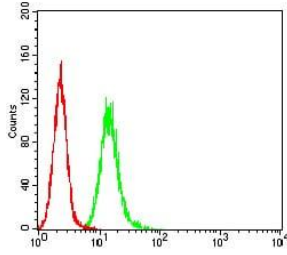
Western blot analysis using RALB mAb against human RALB (AA: 89-206) recombinant protein. (Expected MW is 39.7 kDa)



Western blot analysis using RALB mAb against HEK293 (1) and RALB (AA: 89-206)-hIgGFc transfected HEK293 (2) cell lysate.



Western blot analysis using RALB mouse mAb against A549 (1), U251 (2), HT-29 (3), HEK293 (4), and LOVO (5) cell lysate.



Flow cytometric analysis of HeLa cells using RALB mouse mAb (green) and negative control (red).

### Storage

Store at 4°C short term. Aliquot and store at -20°C long term.

501 Changsheng S Rd, Nanhu Dist, Jiaxing, Zhejiang, China

Tel: 86 21 31007137 | E-mail: [save@bt-laboratory.com](mailto:save@bt-laboratory.com) | [www.bt-laboratory.com](http://www.bt-laboratory.com)