

EhpB1 Monoclonal Antibody

Description

Product type	Antibody
Code	BT-MCA4470
Host	Mouse
Isotype	Mouse IgG1
Size	100µL, 50µL
Immunogen	Purified recombinant fragment of EphB1 (aa19-133) expressed in E. Coli.
Mol wt	110kDa
Species reactivity	Human
Clonality	Monoclonal
Recommended application	WB,IHC
Concentration	N/A
Full name	N/A
Synonyms	ELK;NET;Hek6;EPHT2;EPHB1

This product is for research use only, not for use in human, therapeutic or diagnostic procedure.

Background

EhpB1: EPH receptor B1. It is a receptor for ephrin-B family members. Ephrin receptors and their ligands, the ephrins, mediate numerous developmental processes, particularly in the nervous system. Based on their structures and sequence relationships, ephrins are divided into the ephrin-A (EFNA) class, which are anchored to the membrane by a glycosylphosphatidylinositol linkage, and the ephrin-B (EFNB) class, which are transmembrane proteins. The Eph family of receptors are divided into 2 groups based on the similarity of their extracellular domain sequences and their affinities for binding ephrin-A and ephrin-B ligands. Ephrin receptors make up the largest subgroup of the receptor tyrosine kinase (RTK) family.

Recommended Dilution

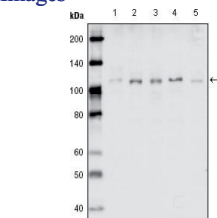
WB: 1:500 - 1:2000

IHC-p: 1:200 - 1:1000

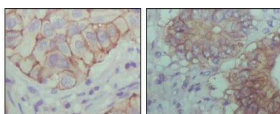
ELISA: 1:10000

Not yet tested in other applications.

Images



Western blot analysis using EhpB1 mouse mAb against MDA-MB-468 (1), MDA-MB-453 (2), MCF-7 (3), T47D (4) and SKBR-3 (5) cell lysate.



Immunohistochemical analysis of paraffin-embedded human lung cancer (left) and colon cancer (right) showing cytoplasmic localization with DAB staining using EphB1 mouse mAb.

Storage

Store at 4°C short term. Aliquot and store at -20°C long term.

501 Changsheng S Rd, Nanhu Dist, Jiaxing, Zhejiang, China

Tel: 86 21 31007137 | E-mail: save@bt-laboratory.com | www.bt-laboratory.com