

CD1A Monoclonal Antibody

Description

Product type	Antibody
Code	BT-MCA4471
Host	Mouse
Isotype	Mouse IgG2a
Size	100µL, 50µL
Immunogen	Purified recombinant fragment of human CD1A (AA: 17-116) expressed in E. Coli.
Mol wt	37kDa
Species reactivity	Others
Clonality	Monoclonal
Recommended application	WB,IHC,ICC,FCM
Concentration	N/A
Full name	N/A
Synonyms	R4;T6;CD1;FCB6;HTA1

This product is for research use only, not for use in human, therapeutic or diagnostic procedure.

Background

This gene encodes a member of the CD1 family of transmembrane glycoproteins, which are structurally related to the major histocompatibility complex (MHC) proteins and form heterodimers with beta-2-microglobulin. The CD1 proteins mediate the presentation of primarily lipid and glycolipid antigens of self or microbial origin to T cells. The human genome contains five CD1 family genes organized in a cluster on chromosome 1. The CD1 family members are thought to differ in their cellular localization and specificity for particular lipid ligands. The protein encoded by this gene localizes to the plasma membrane and to recycling vesicles of the early endocytic system. Alternative splicing results in multiple transcript variants. [provided by RefSeq, Mar 2016]

Recommended Dilution

WB: 1:500 - 1:2000

IHC-p: 1:200 - 1:1000

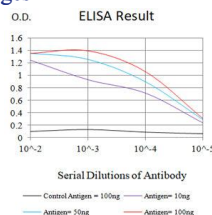
ICC: 1:200 - 1:1000

FCM: 1:200 - 1:400

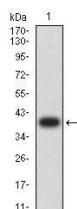
ELISA: 1:10000

Not yet tested in other applications.

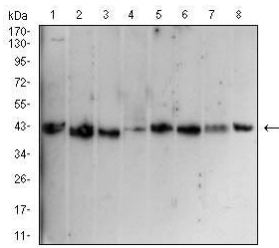
Images



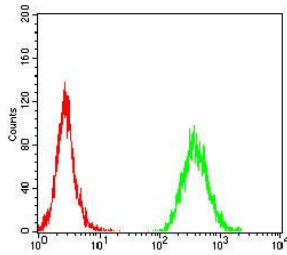
Black line: Control Antigen (100 ng);Purple line: Antigen (10ng); Blue line: Antigen (50 ng); Red line:Antigen (100 ng)



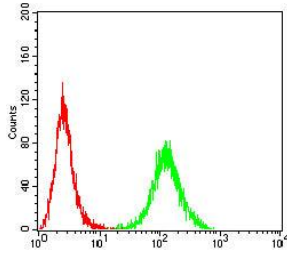
Western blot analysis using CD1A mAb against human CD1A (AA: 17-116) recombinant protein. (Expected MW is 39.7 kDa)



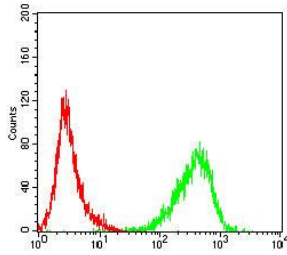
Western blot analysis using CD1A mouse mAb against HeLa (1), HepG2 (2), HEK293 (3), MOLT4 (4), K562 (5), HEK293-6e (6), Cos-7 (7), and NIH/3T3 (8) cell lysate.



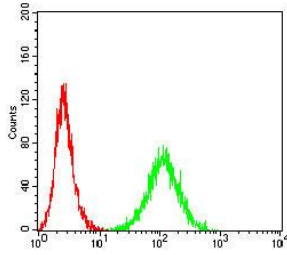
Flow cytometric analysis of MOLT4 cells using CD1A mouse mAb (green) and negative control (red).



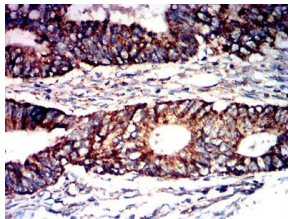
Flow cytometric analysis of HL-60 cells using CD1A mouse mAb (green) and negative control (red).



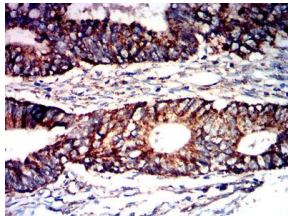
Flow cytometric analysis of Jukrat cells using CD1A mouse mAb (green) and negative control (red).



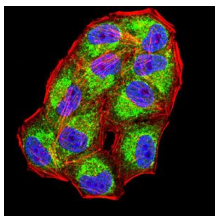
Flow cytometric analysis of K562 cells using CD1A mouse mAb (green) and negative control (red).



Immunohistochemical analysis of paraffin-embedded bladder cancer tissues using CD1A mouse mAb with DAB staining.



Immunohistochemical analysis of paraffin-embedded rectal cancer tissues using CD1A mouse mAb with DAB staining.



Immunofluorescence analysis of HeLa cells using CD1A mouse mAb (green). Blue: DRAQ5 fluorescent DNA dye. Red: Actin filaments have been labeled with Alexa Fluor- 555 phalloidin. Secondary antibody from Fisher (Cat#: 35503)

Storage

Store at 4°C short term. Aliquot and store at -20°C long term.

501 Changsheng S Rd, Nanhu Dist, Jiaxing, Zhejiang, China

Tel: 86 21 31007137 | E-mail: save@bt-laboratory.com | www.bt-laboratory.com