

BRAF Monoclonal Antibody

Description

Product type	Antibody
Code	BT-MCA4472
Host	Mouse
Isotype	Mouse IgG1
Size	100µL, 50µL
Immunogen	Purified recombinant fragment of human BRAF (AA: 299-447) expressed in HEK293-6e.
Mol wt	84.4kda
Species reactivity	Others
Clonality	Monoclonal
Recommended application	WB,IHC,FCM
Concentration	N/A
Full name	N/A
Synonyms	NS7;B-raf;BRAF1;RAFB1;B-RAF1

This product is for research use only, not for use in human, therapeutic or diagnostic procedure.

Background

This gene encodes a protein belonging to the RAF family of serine/threonine protein kinases. This protein plays a role in regulating the MAP kinase/ERK signaling pathway, which affects cell division, differentiation, and secretion. Mutations in this gene, most commonly the V600E mutation, are the most frequently identified cancer-causing mutations in melanoma, and have been identified in various other cancers as well, including non-Hodgkin lymphoma, colorectal cancer, thyroid carcinoma, non-small cell lung carcinoma, hairy cell leukemia and adenocarcinoma of lung. Mutations in this gene are also associated with cardiofaciocutaneous, Noonan, and Costello syndromes, which exhibit overlapping phenotypes. A pseudogene of this gene has been identified on the X chromosome. [provided by RefSeq, Aug 2017]

Recommended Dilution

WB: 1:500 - 1:2000

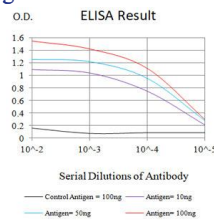
IHC-p: 1:200 - 1:1000

FCM: 1:200 - 1:400

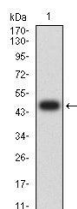
ELISA: 1:10000

Not yet tested in other applications.

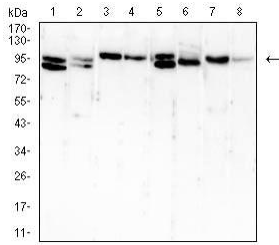
Images



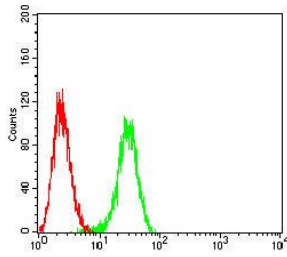
Black line: Control Antigen (100 ng);Purple line: Antigen (10ng); Blue line: Antigen (50 ng); Red line:Antigen (100 ng)



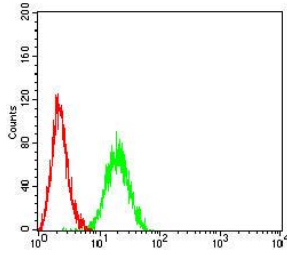
Western blot analysis using BRAF mAb against human BRAF (AA: 299-447) recombinant protein. (Expected MW is 46kDa)



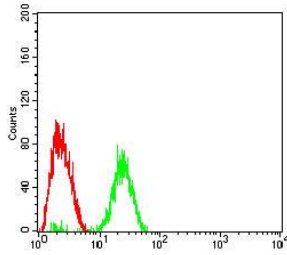
Western blot analysis using BRAF mouse mAb against HeLa (1), HT-29 (2), MOLT4 (3), T47D (4), HePG2 (5), NIH/3T3 (6), PC-12 (7), and COS-7 (8) cell lysate.



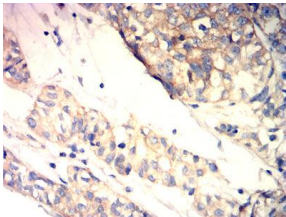
Flow cytometric analysis of BEL-7402 cells using BRAF mouse mAb (green) and negative control (red).



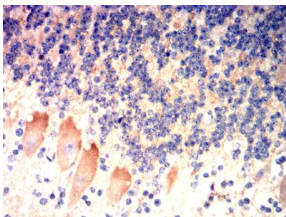
Flow cytometric analysis of HeLa cells using BRAF mouse mAb (green) and negative control (red).



Flow cytometric analysis of HepG2 cells using BRAF mouse mAb (green) and negative control (red).



Immunohistochemical analysis of paraffin-embedded bladder cancer tissues using BRAF mouse mAb with DAB staining.



Immunohistochemical analysis of paraffin-embedded cerebellar tissues using BRAF mouse mAb with DAB staining.

Storage

Store at 4°C short term. Aliquot and store at -20°C long term.

501 Changsheng S Rd, Nanhu Dist, Jiaxing, Zhejiang, China

Tel: 86 21 31007137 | E-mail: save@bt-laboratory.com | www.bt-laboratory.com