

PPP1CB Monoclonal Antibody

Description

Product type	Antibody
Code	BT-MCA4489
Host	Mouse
Isotype	Mouse IgG1
Size	100 μ L, 50 μ L
Immunogen	Purified recombinant fragment of human PPP1CB (AA: 174-327) expressed in E. Coli.
Mol wt	37.2kDa
Species reactivity	Human
Clonality	Monoclonal
Recommended application	WB,IHC,ICC,FCM
Concentration	N/A
Full name	N/A
Synonyms	PP1B;PP-1B;PPP1CD;PP1beta

This product is for research use only, not for use in human, therapeutic or diagnostic procedure.

Background

The protein encoded by this gene is one of the three catalytic subunits of protein phosphatase 1 (PP1). PP1 is a serine/threonine specific protein phosphatase known to be involved in the regulation of a variety of cellular processes, such as cell division, glycogen metabolism, muscle contractility, protein synthesis, and HIV-1 viral transcription. Mouse studies suggest that PP1 functions as a suppressor of learning and memory. Two alternatively spliced transcript variants encoding distinct isoforms have been observed

Recommended Dilution

WB: 1:500 - 1:2000

IHC-p: 1:200 - 1:1000

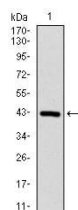
ICC: 1:200 - 1:1000

FCM: 1:200 - 1:400

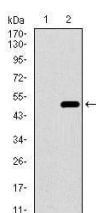
ELISA: 1:10000

Not yet tested in other applications.

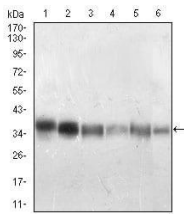
Images



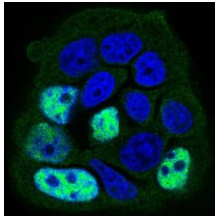
Western blot analysis using PPP1CB mAb against human PPP1CB (AA: 174-327) recombinant protein. (Expected MW is 43.2 kDa)



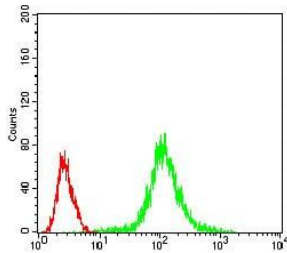
Western blot analysis using PPP1CB mAb against HEK293 (1) and PPP1CB (AA: 174-327)-hIgGfc transfected HEK293 (2) cell lysate.



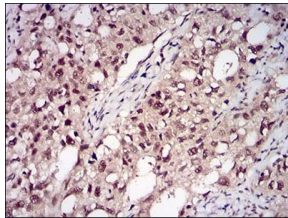
Western blot analysis using PPP1CB mouse mAb against Jurkat (1), A431 (2), HeLa (3), HepG2 (4), HEK293 (5), MCF-7 (6) cell lysate.



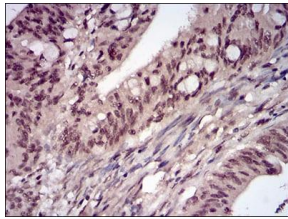
Immunofluorescence analysis of MCF-7 cells using PPP1CB mouse mAb (green). Blue: DRAQ5 fluorescent DNA dye. Secondary antibody from Fisher (Cat#: 35503)



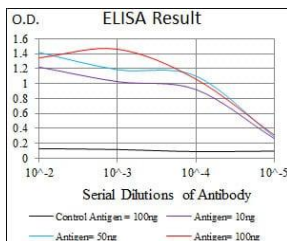
Flow cytometric analysis of Jurkat cells using PPP1CB mouse mAb (green) and negative control (red).



Immunohistochemical analysis of paraffin-embedded cervical cancer tissues using PPP1CB mouse mAb with DAB staining.



Immunohistochemical analysis of paraffin-embedded rectum cancer tissues using PPP1CB mouse mAb with DAB staining.



Black line: Control Antigen (100 ng); Purple line: Antigen(10ng); Blue line: Antigen (50 ng); Red line: Antigen (100 ng);

Storage

Store at 4°C short term. Aliquot and store at -20°C long term.

501 Changsheng S Rd, Nanhu Dist, Jiaxing, Zhejiang, China

Tel: 86 21 31007137 | E-mail: save@bt-laboratory.com | www.bt-laboratory.com