

UBE2C Monoclonal Antibody

Description

Product type	Antibody
Code	BT-MCA4491
Host	Mouse
Isotype	Mouse IgG2a
Size	100 μ L, 50 μ L
Immunogen	Purified recombinant fragment of human UBE2C (AA: FULL(1-179)) expressed in E. Coli.
Mol wt	19.7kDa
Species reactivity	Human
Clonality	Monoclonal
Recommended application	IHC
Concentration	N/A
Full name	N/A
Synonyms	UBCH10;dJ447F3.2

This product is for research use only, not for use in human, therapeutic or diagnostic procedure.

Background

The modification of proteins with ubiquitin is an important cellular mechanism for targeting abnormal or short-lived proteins for degradation. Ubiquitination involves at least three classes of enzymes: ubiquitin-activating enzymes, ubiquitin-conjugating enzymes, and ubiquitin-protein ligases. This gene encodes a member of the E2 ubiquitin-conjugating enzyme family. The encoded protein is required for the destruction of mitotic cyclins and for cell cycle progression, and may be involved in cancer progression. Multiple transcript variants encoding different isoforms have been found for this gene. Pseudogenes of this gene have been defined on chromosomes 4, 14, 15, 18, and 19.

Recommended Dilution

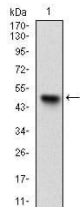
WB: 1:500 - 1:2000

IHC-p: 1:200 - 1:1000

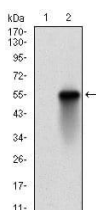
ELISA: 1:10000

Not yet tested in other applications.

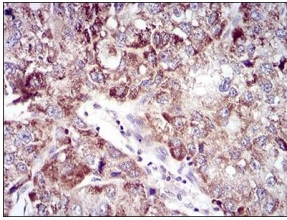
Images



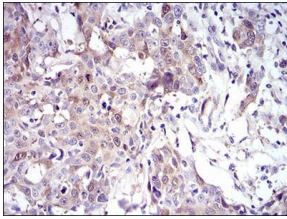
Western blot analysis using UBE2C mAb against human UBE2C (AA: FULL(1-179)) recombinant protein. (Expected MW is 45.6 kDa)



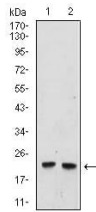
Western blot analysis using UBE2C mAb against HEK293 (1) and UBE2C (AA: FULL(1-179))-hlgGfc transfected HEK293 (2) cell lysate.



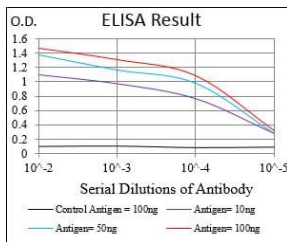
Immunohistochemical analysis of paraffin-embedded liver cancer tissues using UBE2C mouse mAb with DAB staining.



Immunohistochemical analysis of paraffin-embedded esophageal cancer tissues using UBE2C mouse mAb with DAB staining.



Western blot analysis using UBE2C mouse mAb against HeLa (1), and Raji (2) cell lysate.



Black line: Control Antigen (100 ng); Purple line: Antigen(10ng); Blue line: Antigen (50 ng); Red line: Antigen (100 ng);

Storage

Store at 4°C short term. Aliquot and store at -20°C long term.

501 Changsheng S Rd, Nanhu Dist, Jiaxing, Zhejiang, China

Tel: 86 21 31007137 | E-mail: save@bt-laboratory.com | www.bt-laboratory.com