

SELL Monoclonal Antibody

Description

| | |
|--------------------------------|--|
| Product type | Antibody |
| Code | BT-MCA4497 |
| Host | Mouse |
| Isotype | Mouse IgG1 |
| Size | 100µL, 50µL |
| Immunogen | Purified recombinant fragment of human SELL (AA: 83-186) expressed in E. Coli. |
| Mol wt | 42.2kDa |
| Species reactivity | Human |
| Clonality | Monoclonal |
| Recommended application | ICC |
| Concentration | N/A |
| Full name | N/A |
| Synonyms | TQ1;LAM1;LEU8;LNHR;LSEL;CD62L;LYAM1;PLNHR;LECAM1 |

This product is for research use only, not for use in human, therapeutic or diagnostic procedure.

Background

N/A

Recommended Dilution

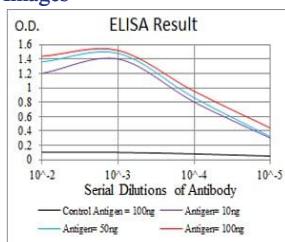
WB: 1:500 - 1:2000

ICC: 1:200 - 1:1000

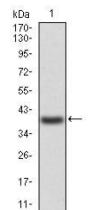
ELISA: 1:10000

Not yet tested in other applications.

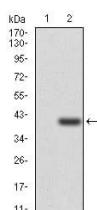
Images



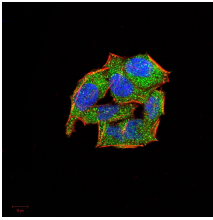
Black line: Control Antigen (100 ng); Purple line: Antigen(10ng); Blue line: Antigen (50 ng); Red line: Antigen (100 ng);



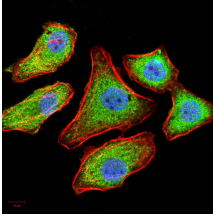
Western blot analysis using SELL mAb against human SELL (AA: 83-186) recombinant protein. (Expected MW is 37.4 kDa)



Western blot analysis using SELL mAb against HEK293 (1) and SELL (AA:83-186)-hIgGfc transfected HEK293 (2) cell lysate.



Immunofluorescence analysis of HeLa cells using SELL mouse mAb (green). Blue: DRAQ5 fluorescent DNA dye. Red: Actin filaments have been labeled with Alexa Fluor- 555 phalloidin. Secondary antibody from Fisher (Cat#: 35503)



Immunofluorescence analysis of MCF-7 cells using SELL mouse mAb (green). Blue: DRAQ5 fluorescent DNA dye. Red: Actin filaments have been labeled with Alexa Fluor- 555 phalloidin. Secondary antibody from Fisher (Cat#: 35503)

Storage

Store at 4°C short term. Aliquot and store at -20°C long term.

501 Changsheng S Rd, Nanhu Dist, Jiaxing, Zhejiang, China

Tel: 86 21 31007137 | E-mail: save@bt-laboratory.com | www.bt-laboratory.com