

TUBE1 Monoclonal Antibody

Description

Product type	Antibody
Code	BT-MCA4501
Host	Mouse
Isotype	Mouse IgG1
Size	100µL, 50µL
Immunogen	Purified recombinant fragment of human TUBE1 (AA: 314-472) expressed in E. Coli.
Mol wt	53kDa
Species reactivity	Human
Clonality	Monoclonal
Recommended application	IHC,FCM
Concentration	N/A
Full name	N/A
Synonyms	TUBE;dJ142L7.2

This product is for research use only, not for use in human, therapeutic or diagnostic procedure.

Background

This gene encodes a member of the tubulin superfamily. This protein localizes to the centriolar sub-distal appendages that are associated with the older of the two centrioles after centrosome duplication. This protein plays a central role in organization of the microtubules during centriole duplication. A pseudogene of this gene is found on chromosome 5.

Recommended Dilution

WB: 1:500 - 1:2000

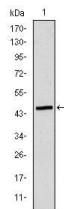
IHC-p: 1:200 - 1:1000

FCM: 1:200 - 1:400

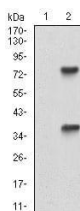
ELISA: 1:10000

Not yet tested in other applications.

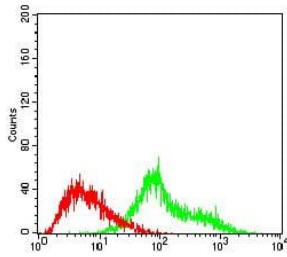
Images



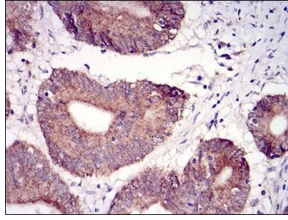
Western blot analysis using TUBE1 mAb against human TUBE1 (AA: 314-472) recombinant protein.
(Expected MW is 44.3 kDa)



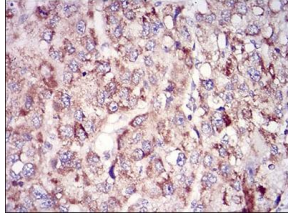
Western blot analysis using TUBE1 mAb against HEK293 (1) and TUBE1 (AA: 314-472)-hIgGfc transfected HEK293 (2) cell lysate.



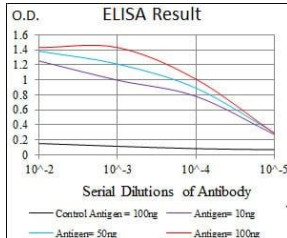
Flow cytometric analysis of HeLa cells using TUBE1 mouse mAb (green) and negative control (red).



Immunohistochemical analysis of paraffin-embedded colon cancer tissues using TUBE1 mouse mAb with DAB staining.



Immunohistochemical analysis of paraffin-embedded liver cancer tissues using TUBE1 mouse mAb with DAB staining.



Black line: Control Antigen (100 ng); Purple line: Antigen(10ng); Blue line: Antigen (50 ng); Red line: Antigen (100 ng);

Storage

Store at 4°C short term. Aliquot and store at -20°C long term.

501 Changsheng S Rd, Nanhu Dist, Jiaxing, Zhejiang, China

Tel: 86 21 31007137 | E-mail: save@bt-laboratory.com | www.bt-laboratory.com