

LPA Monoclonal Antibody

Description

Product type	Antibody
Code	BT-MCA4510
Host	Mouse
Isotype	Mouse IgG1
Size	100μL, 50μL
Immunogen	Purified recombinant fragment of LPA (4330-4521) expressed in E. Coli.
Mol wt	N/A
Species reactivity	Human
Clonality	Monoclonal
Recommended application	IHC
Concentration	N/A
Full name	N/A
Synonyms	LP;AK38;APOA;LPA

This product is for research use only, not for use in human, therapeutic or diagnostic procedure.

Background

LPA: lipoprotein, Lp(a). Apo(a) is the main constituent of lipoprotein(a) (lp(a)). It has serine proteinase activity and is able of autoproteolysis. Inhibits tissue-type plasminogen activator 1. Lp(a) may be a ligand for megalin/gp 330. Apo(a) is known to be proteolytically cleaved, leading to the formation of the so-called mini-lp(a). Apo(a) fragments accumulate in atherosclerotic lesions, where they may promote thrombogenesis. O-glycosylation may limit the extent of proteolytic fragmentation.

Recommended Dilution

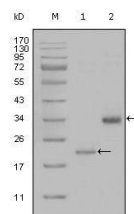
WB: 1:500 - 1:2000

IHC-p: 1:200 - 1:1000

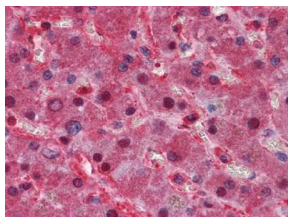
ELISA: 1:10000

Not yet tested in other applications.

Images



Western blot analysis using LPA mouse mAb against truncated LPA-His recombinant protein (1) and truncated Trx-LPA(aa4330-4521) recombinant protein (2).



Immunohistochemical analysis of paraffin-embedded human Liver tissues using LPA mouse mAb

Storage

Store at 4°C short term. Aliquot and store at -20°C long term.

501 Changsheng S Rd, Nanhu Dist, Jiaxing, Zhejiang, China

Tel: 86 21 31007137 | E-mail: save@bt-laboratory.com | www.bt-laboratory.com