

CD10 Monoclonal Antibody

Description

Product type	Antibody
Code	BT-MCA4522
Host	Mouse
Isotype	Mouse IgG2b
Size	100µL, 50µL
Immunogen	Purified recombinant fragment of human CD10 (AA: (651-750)) expressed in E. Coli.
Mol wt	85kDa
Species reactivity	Others
Clonality	Monoclonal
Recommended application	WB,IHC,FCM
Concentration	N/A
Full name	N/A
Synonyms	MME;NEP;SFE;CALLA

This product is for research use only, not for use in human, therapeutic or diagnostic procedure.

Background

This gene encodes a common acute lymphocytic leukemia antigen that is an important cell surface marker in the diagnosis of human acute lymphocytic leukemia (ALL). This protein is present on leukemic cells of pre-B phenotype, which represent 85% of cases of ALL. This protein is not restricted to leukemic cells, however, and is found on a variety of normal tissues. It is a glycoprotein that is particularly abundant in kidney, where it is present on the brush border of proximal tubules and on glomerular epithelium. The protein is a neutral endopeptidase that cleaves peptides at the amino side of hydrophobic residues and inactivates several peptide hormones including glucagon, enkephalins, substance P, neurotensin, oxytocin, and bradykinin. This gene, which encodes a 100-kD type II transmembrane glycoprotein, exists in a single copy of greater than 45 kb. The 5' untranslated region of this gene is alternatively spliced, resulting in four separate mRNA transcripts. The coding region is not affected by alternative splicing.

Recommended Dilution

WB: 1:500 - 1:2000

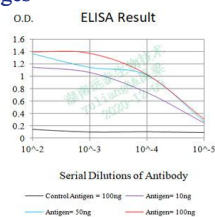
IHC-p: 1:200 - 1:1000

FCM: 1:200 - 1:400

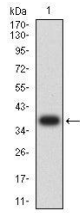
ELISA: 1:10000

Not yet tested in other applications.

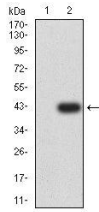
Images



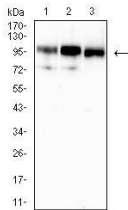
Black line: Control Antigen (100 ng); Purple line: Antigen (10ng); Blue line: Antigen (50 ng); Red line: Antigen (100 ng)



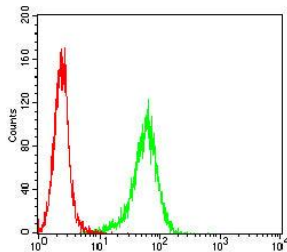
Western blot analysis using CD10 mAb against human CD10 (AA: (651-750)) recombinant protein.
(Expected MW is 38.2 kDa)



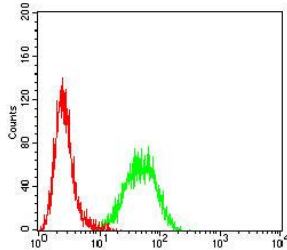
Western blot analysis using CD10 mAb against HEK293-6e (1) and CD10 (AA: (651-750))-hlgGFc transfected HEK293-6e (2) cell lysate.



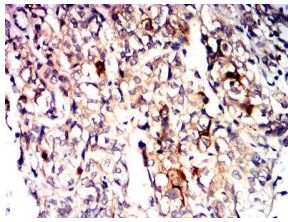
Western blot analysis using CD10 mouse mAb against Raji (1), Ramos (2), and LNCap (3) cell lysate.



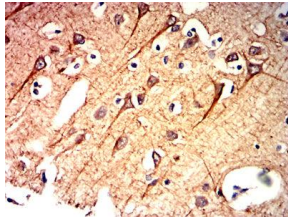
Flow cytometric analysis of HeLa cells using CD10 mouse mAb (green) and negative control (red).



Flow cytometric analysis of THP-1 cells using CD10 mouse mAb (green) and negative control (red).



Immunohistochemical analysis of paraffin-embedded bladder cancer tissues using CD10 mouse mAb with DAB staining.



Immunohistochemical analysis of paraffin-embedded brain tissues using CD10 mouse mAb with DAB staining.

Storage

Store at 4°C short term. Aliquot and store at -20°C long term.

501 Changsheng S Rd, Nanhu Dist, Jiaxing, Zhejiang, China

Tel: 86 21 31007137 | E-mail: save@bt-laboratory.com | www.bt-laboratory.com