

SLC2A14 Monoclonal Antibody

Description

Product type	Antibody
Code	BT-MCA4529
Host	Mouse
Isotype	Mouse IgG2a
Size	100µL, 50µL
Immunogen	Purified recombinant fragment of human SLC2A14 (AA: extra mix) expressed in E. Coli.
Mol wt	56.3kDa
Species reactivity	Human
Clonality	Monoclonal
Recommended application	IHC,ICC
Concentration	N/A
Full name	N/A
Synonyms	GLUT14;SLC2A3P3

This product is for research use only, not for use in human, therapeutic or diagnostic procedure.

Background

Members of the glucose transporter (GLUT) family, including SLC2A14, are highly conserved integral membrane proteins that transport hexoses such as glucose and fructose into all mammalian cells. GLUTs show tissue and cell-type specific expression.

Recommended Dilution

WB: 1:500 - 1:2000

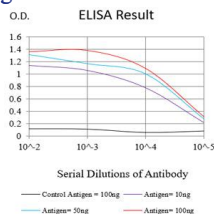
IHC-p: 1:200 - 1:1000

ICC: 1:200 - 1:1000

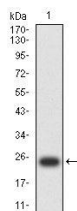
ELISA: 1:10000

Not yet tested in other applications.

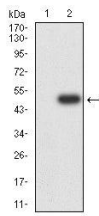
Images



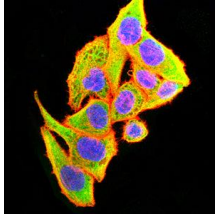
Black line: Control Antigen (100 ng);Purple line: Antigen (10ng); Blue line: Antigen (50 ng); Red line:Antigen (100 ng)



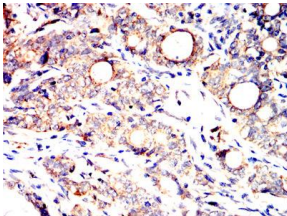
Western blot analysis using SLC2A14 mAb against human SLC2A14 (AA: extra mix) recombinant protein. (Expected MW is 23.2 kDa)



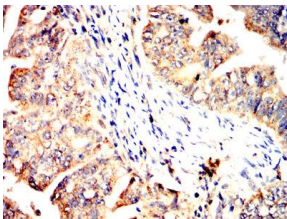
Western blot analysis using SLC2A14 mAb against HEK293-6e (1) and SLC2A14 (AA: extra mix)-hlgGFc transfected HEK293-6e (2) cell lysate.



Immunofluorescence analysis of HeLa cells using SLC2A14 mouse mAb (green). Blue: DRAQ5 fluorescent DNA dye. Red: Actin filaments have been labeled with Alexa Fluor-555 phalloidin. Secondary antibody from Fisher (Cat#: 35503)



Immunohistochemical analysis of paraffin-embedded cervical cancer tissues using SLC2A14 mouse mAb with DAB staining.



Immunohistochemical analysis of paraffin-embedded rectum cancer tissues using SLC2A14 mouse mAb with DAB staining.

Storage

Store at 4°C short term. Aliquot and store at -20°C long term.

501 Changsheng S Rd, Nanhu Dist, Jiaxing, Zhejiang, China

Tel: 86 21 31007137 | E-mail: save@bt-laboratory.com | www.bt-laboratory.com