

MYL3 Monoclonal Antibody

Description

Product type	Antibody
Code	BT-MCA4544
Host	Mouse
Isotype	Mouse IgG1
Size	100µL, 50µL
Immunogen	Purified recombinant fragment of MYL3 expressed in E. Coli.
Mol wt	22kDa
Species reactivity	Human
Clonality	Monoclonal
Recommended application	WB,IHC
Concentration	N/A
Full name	N/A
Synonyms	CMH8;VLC1;MLC1V;MLC1SB

This product is for research use only, not for use in human, therapeutic or diagnostic procedure.

Background

Myosins are a large superfamily of motor proteins that move along actin filaments, while hydrolyzing ATP. Myosin is the major component of thick muscle filaments, and is a long asymmetric molecule containing a globular head and a long tail. The molecule consists of two heavy chains and four light chains. Activation of smooth and cardiac muscle primarily involves pathways which increase calcium and myosin phosphorylation resulting in contraction. Myosin light chain phosphatase acts to regulate muscle contraction by dephosphorylating activated myosin light chain. MYL3 encodes myosin light chain 3, an alkali light chain also referred to in the literature as both the ventricular isoform and the slow skeletal muscle isoform. Human myosin light chain has clinical application as a cardiac marker. Mutations in MYL3 have been identified as a cause of mid-left ventricular chamber type hypertrophic cardiomyopathy.

Recommended Dilution

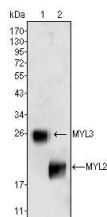
WB: 1:500 - 1:2000

IHC-p: 1:200 - 1:1000

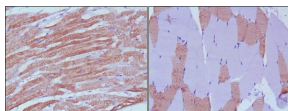
ELISA: 1:10000

Not yet tested in other applications.

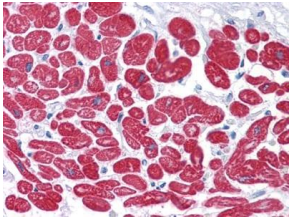
Images



Western blot analysis using MYL3 (1) and MYL2 (2) mouse mAb against rat fetal heart tissues lysate.



Immunohistochemical analysis of paraffin-embedded human skeletal muscle (left) and cardiac muscle (right) using MYL3 mouse mAb with DAB staining.



Immunohistochemical analysis of paraffin-embedded human Heart tissues using MYL3 mouse mAb.

Storage

Store at 4°C short term. Aliquot and store at -20°C long term.

501 Changsheng S Rd, Nanhu Dist, Jiaxing, Zhejiang, China

Tel: 86 21 31007137 | E-mail: save@bt-laboratory.com | www.bt-laboratory.com