

ALCAM Monoclonal Antibody

Description

Product type	Antibody
Code	BT-MCA4554
Host	Mouse
Isotype	Mouse IgG1
Size	100µL, 50µL
Immunogen	Purified recombinant fragment of ALCAM (aa405-524) expressed in E. Coli.
Mol wt	N/A
Species reactivity	Human
Clonality	Monoclonal
Recommended application	IHC
Concentration	N/A
Full name	N/A
Synonyms	MEMD;CD166;ALCAM

This product is for research use only, not for use in human, therapeutic or diagnostic procedure.

Background

ALCAM(CD166): Activated leukocyte cell adhesion molecule. CD166 is a member of the Ig superfamily and is expressed on activated T-cells, B cells and other cells including thymic epithelial cells, fibroblasts, keratinocytes and neurons. CD6 has been identified as a receptor for CD166.

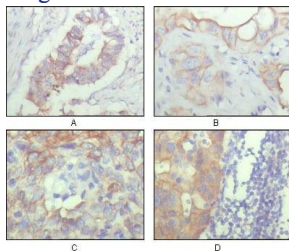
Recommended Dilution

IHC-p: 1:200 - 1:1000

ELISA: 1:10000

Not yet tested in other applications.

Images



Immunohistochemical analysis of paraffin-embedded human ovary carcinoma (A), kidney carcinoma (B), lung carcinoma (C) and breast carcinoma (D), showing cytoplasmic and membrane localization with DAB staining using ALCAM mouse mAb.

Storage

Store at 4°C short term. Aliquot and store at -20°C long term.