

UCHL1 Monoclonal Antibody

Description

Product type	Antibody
Code	BT-MCA4575
Host	Mouse
Isotype	Mouse IgG2b
Size	100µL, 50µL
Immunogen	Purified recombinant fragment of human UCHL1 (AA: 1-220) expressed in E. Coli.
Mol wt	24.8kDa
Species reactivity	Human,Mouse,Rat
Clonality	Monoclonal
Recommended application	WB,IHC,FCM
Concentration	N/A
Full name	N/A
Synonyms	NDGOA;PARK5;PGP95;SPG79;PGP9.5;UCHL-1;Uch-L1;HEL-117;PGP 9.5;HEL-S-53

This product is for research use only, not for use in human, therapeutic or diagnostic procedure.

Background

N/A

Recommended Dilution

WB: 1:500 - 1:2000

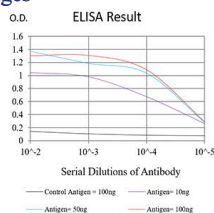
IHC-p: 1:200 - 1:1000

FCM: 1:200 - 1:400

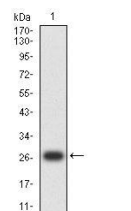
ELISA: 1:10000

Not yet tested in other applications.

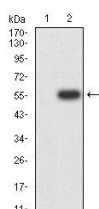
Images



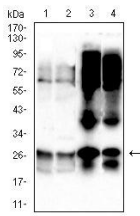
Black line: Control Antigen (100 ng);Purple line: Antigen (10ng); Blue line: Antigen (50 ng); Red line:Antigen (100 ng)



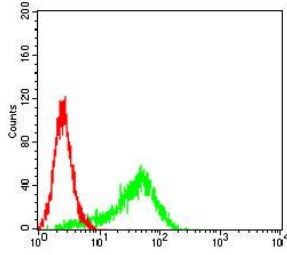
Western blot analysis using UCHL1 mAb against human UCHL1 (AA: 1-220) recombinant protein. (Expected MW is 27.5 kDa)



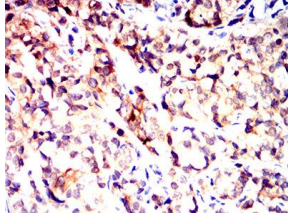
Western blot analysis using UCHL1 mAb against HEK293 (1) and UCHL1 (AA: 1-220)-hIgGFc transfected HEK293 (2) cell lysate.



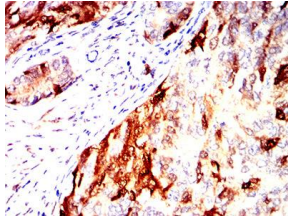
Western blot analysis using UCHL1 mouse mAb against DU145 (1), A549 (2) cell lysate, rat brain (3), and mouse brain (4) tissue lysate.



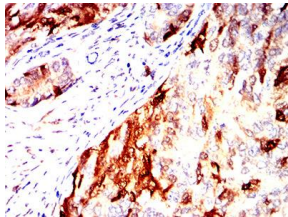
Flow cytometric analysis of HeLa cells using UCHL1 mouse mAb (green) and negative control (red).



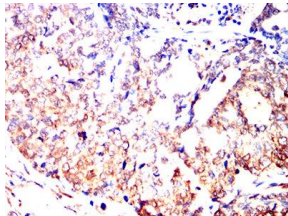
Immunohistochemical analysis of paraffin-embedded bladder cancer tissues using UCHL1 mouse mAb with DAB staining.



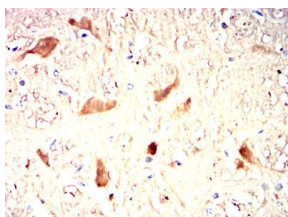
Immunohistochemical analysis of paraffin-embedded lung cancer tissues using UCHL1 mouse mAb with DAB staining.



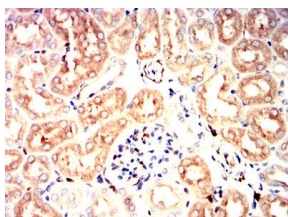
Immunohistochemical analysis of paraffin-embedded cervical cancer tissues using UCHL1 mouse mAb with DAB staining.



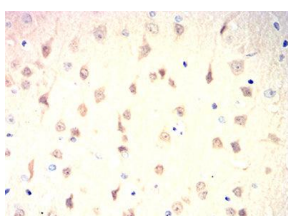
Immunohistochemical analysis of paraffin-embedded esophageal cancer tissues using UCHL1 mouse mAb with DAB staining.



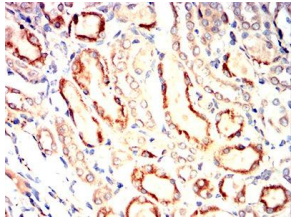
Immunohistochemical analysis of paraffin-embedded mouse brain tissues using UCHL1 mouse mAb with DAB staining.



Immunohistochemical analysis of paraffin-embedded mouse kidney tissues using UCHL1 mouse mAb with DAB staining.



Immunohistochemical analysis of paraffin-embedded rat brain tissues using UCHL1 mouse mAb with DAB staining.



Immunohistochemical analysis of paraffin-embedded rat kidney tissues using UCHL1 mouse mAb with DAB staining.

Storage

Store at 4°C short term. Aliquot and store at -20°C long term.

501 Changsheng S Rd, Nanhu Dist, Jiaxing, Zhejiang, China

Tel: 86 21 31007137 | E-mail: save@bt-laboratory.com | www.bt-laboratory.com