

ATM Monoclonal Antibody

Description

Product type	Antibody
Code	BT-MCA4581
Host	Mouse
Isotype	Mouse IgG2b
Size	100µL, 50µL
Immunogen	Purified recombinant fragment of human ATM (AA: 2577-3056) expressed in E. Coli.
Mol wt	350.7kDa
Species reactivity	Human,Mouse,Monkey,Rat
Clonality	Monoclonal
Recommended application	IHC,ICC,FCM
Concentration	N/A
Full name	N/A
Synonyms	AT1;ATA;ATC;ATD;ATE;ATDC;TEL1;TELO1

This product is for research use only, not for use in human, therapeutic or diagnostic procedure.

Background

The protein encoded by this gene belongs to the PI3/PI4-kinase family. This protein is an important cell cycle checkpoint kinase that phosphorylates; thus, it functions as a regulator of a wide variety of downstream proteins, including tumor suppressor proteins p53 and BRCA1, checkpoint kinase CHK2, checkpoint proteins RAD17 and RAD9, and DNA repair protein NBS1. This protein and the closely related kinase ATR are thought to be master controllers of cell cycle checkpoint signaling pathways that are required for cell response to DNA damage and for genome stability. Mutations in this gene are associated with ataxia telangiectasia, an autosomal recessive disorder.

Recommended Dilution

IHC-p: 1:200 - 1:1000

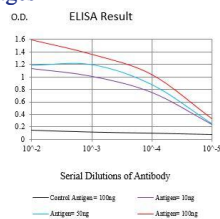
ICC: 1:200 - 1:1000

FCM: 1:200 - 1:400

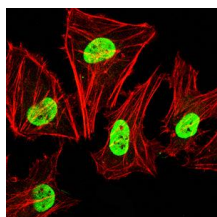
ELISA: 1:10000

Not yet tested in other applications.

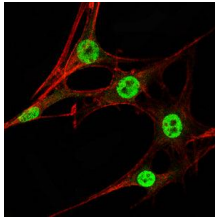
Images



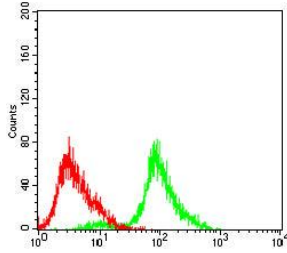
Black line: Control Antigen (100 ng);Purple line: Antigen (10ng); Blue line: Antigen (50 ng); Red line:Antigen (100 ng)



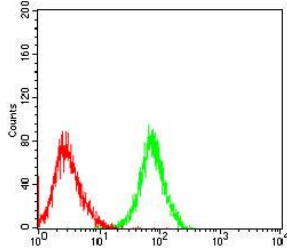
Immunofluorescence analysis of HeLa cells using ATM mouse mAb (green). Blue: DRAQ5 fluorescent DNA dye. Red: Actin filaments have been labeled with Alexa Fluor- 555 phalloidin. Secondary antibody from Fisher (Cat#: 35503)



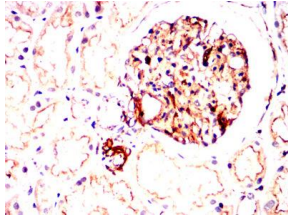
Immunofluorescence analysis of NIH/3T3 cells using ATM mouse mAb (green). Blue: DRAQ5 fluorescent DNA dye. Red: Actin filaments have been labeled with Alexa Fluor- 555 phalloidin. Secondary antibody from Fisher (Cat#: 35503)



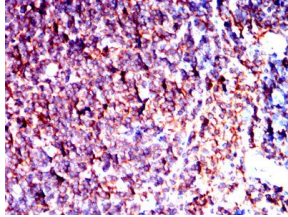
Flow cytometric analysis of HeLa cells using ATM mouse mAb (green) and negative control (red).



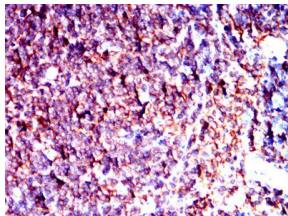
Flow cytometric analysis of COS-7 cells using ATM mouse mAb (green) and negative control (red).



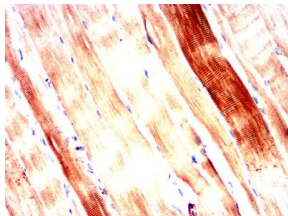
Immunohistochemical analysis of paraffin-embedded kidney tissues using ATM mouse mAb with DAB staining.



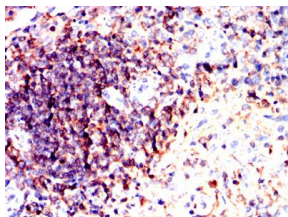
Immunohistochemical analysis of paraffin-embedded gastric cancer tissues using ATM mouse mAb with DAB staining.



Immunohistochemical analysis of paraffin-embedded Mouse spleen tissues using ATM mouse mAb with DAB staining.



Immunohistochemical analysis of paraffin-embedded Rat myocardium tissues using ATM mouse mAb with DAB staining.



Immunohistochemical analysis of paraffin-embedded Rabbit spleen tissues using ATM mouse mAb with DAB staining.

Storage

Store at 4°C short term. Aliquot and store at -20°C long term.

501 Changsheng S Rd, Nanhu Dist, Jiaxing, Zhejiang, China
Tel: 86 21 31007137 | E-mail: save@bt-laboratory.com | www.bt-laboratory.com