

CD21 Monoclonal Antibody

Description

Product type	Antibody
Code	BT-MCA4589
Host	Mouse
Isotype	Mouse IgG1
Size	100µL, 50µL
Immunogen	Purified recombinant fragment of human CD21 (AA: extra 740-964) expressed in E. Coli.
Mol wt	112.9kDa
Species reactivity	Others
Clonality	Monoclonal
Recommended application	FCM
Concentration	N/A
Full name	N/A
Synonyms	CR2;CR;C3DR;CVID7;SLEB9

This product is for research use only, not for use in human, therapeutic or diagnostic procedure.

Background

This gene encodes a membrane protein, which functions as a receptor for Epstein-Barr virus (EBV) binding on B and T lymphocytes. Genetic variations in this gene are associated with susceptibility to systemic lupus erythematosus type 9 (SLEB9). Alternatively spliced transcript variants encoding different isoforms have been found for this gene.

Recommended Dilution

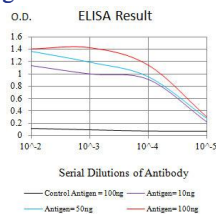
WB: 1:500 - 1:2000

FCM: 1:200-1:400

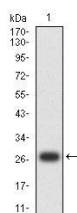
ELISA: 1:10000

Not yet tested in other applications.

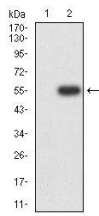
Images



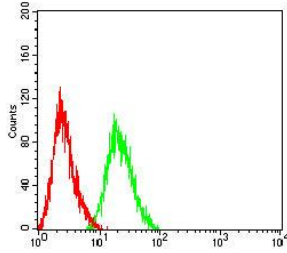
Black line: Control Antigen (100 ng); Purple line: Antigen (10ng); Blue line: Antigen (50 ng); Red line: Antigen (100 ng)



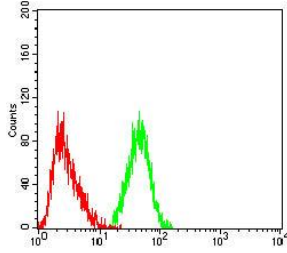
Western blot analysis using CD21 mAb against human CD21 (AA: extra 740-964) recombinant protein. (Expected MW is 27.6 kDa)



Western blot analysis using CD21 mAb against HEK293-6e (1) and CD21 (AA: extra 740-964)-hlgGfc transfected HEK293 (2) cell lysate.



Flow cytometric analysis of HL-60 cells using CD21 mouse mAb (green) and negative control (red).



Flow cytometric analysis of Jurkat cells using CD21 mouse mAb (green) and negative control (red).

Storage

Store at 4°C short term. Aliquot and store at -20°C long term.

501 Changsheng S Rd, Nanhu Dist, Jiaxing, Zhejiang, China

Tel: 86 21 31007137 | E-mail: save@bt-laboratory.com | www.bt-laboratory.com