

TYRO3 Monoclonal Antibody

Description

Product type	Antibody
Code	BT-MCA4616
Host	Mouse
Isotype	Mouse IgG1
Size	100µL, 50µL
Immunogen	Purified recombinant fragment of human TYRO3 (AA: extra 230-429) expressed in mammalian.
Mol wt	96.9kDa
Species reactivity	Human
Clonality	Monoclonal
Recommended application	IHC,FCM
Concentration	N/A
Full name	N/A
Synonyms	BYK;Dtk;RSE;Rek;Sky;Tif;Etk-2

This product is for research use only, not for use in human, therapeutic or diagnostic procedure.

Background

The gene is part of a 3-member transmembrane receptor kinase receptor family with a processed pseudogene distal on chromosome 15. The encoded protein is activated by the products of the growth arrest-specific gene 6 and protein S genes and is involved in controlling cell survival and proliferation, spermatogenesis, immunoregulation and phagocytosis. The encoded protein has also been identified as a cell entry factor for Ebola and Marburg viruses.

Recommended Dilution

WB: 1:500 - 1:2000

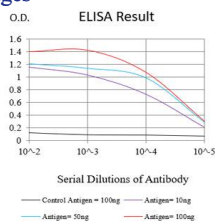
IHC-p: 1:200 - 1:1000

FCM: 1:200 - 1:400

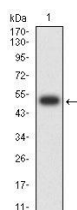
ELISA: 1:10000

Not yet tested in other applications.

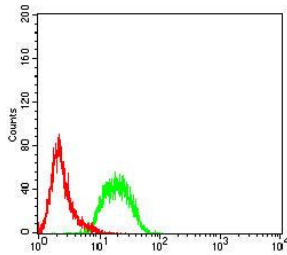
Images



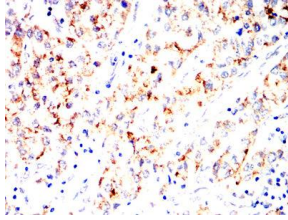
Black line: Control Antigen (100 ng);Purple line: Antigen (10ng); Blue line: Antigen (50 ng); Red line:Antigen (100 ng)



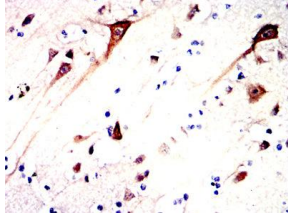
Western blot analysis using TYRO3 mAb against human TYRO3 (AA: 230-429) recombinant protein. (Expected MW is 52 kDa)



Flow cytometric analysis of U937 cells using TYRO3 mouse mAb (green) and negative control (red).



Immunohistochemical analysis of paraffin-embedded liver cancer tissues using TYRO3 mouse mAb with DAB staining.



Immunohistochemical analysis of paraffin-embedded human brain tissues using TYRO3 mouse mAb with DAB staining.

Storage

Store at 4°C short term. Aliquot and store at -20°C long term.

501 Changsheng S Rd, Nanhu Dist, Jiaxing, Zhejiang, China

Tel: 86 21 31007137 | E-mail: save@bt-laboratory.com | www.bt-laboratory.com