

SLC7A3 Monoclonal Antibody

Description

Product type	Antibody
Code	BT-MCA4618
Host	Mouse
Isotype	Mouse IgG1
Size	100µL, 50µL
Immunogen	Purified recombinant fragment of human SLC7A3 (AA: extra MIX) expressed in E. Coli.
Mol wt	67.1kDa
Species reactivity	Human
Clonality	Monoclonal
Recommended application	WB,FCM
Concentration	N/A
Full name	N/A
Synonyms	CAT3;ATRC3;CAT-3

This product is for research use only, not for use in human, therapeutic or diagnostic procedure.

Background

This gene encodes a member of the solute carrier family 7. The encoded protein is a sodium-independent cationic amino acid transporter. Alternate splicing results in multiple transcripts that encoded the same protein.

Recommended Dilution

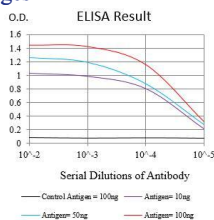
WB: 1:500 - 1:2000

FCM: 1:200 - 1:400

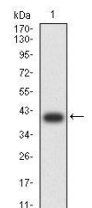
ELISA: 1:10000

Not yet tested in other applications.

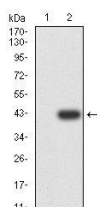
Images



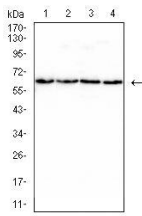
Black line: Control Antigen (100 ng);Purple line: Antigen (10ng); Blue line: Antigen (50 ng); Red line:Antigen (100 ng)



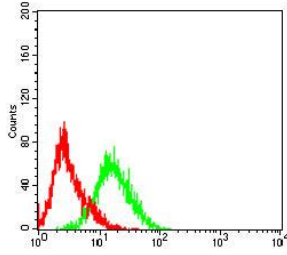
Western blot analysis using SLC7A3 mAb against human SLC7A3 (AA: extra MIX) recombinant protein. (Expected MW is 38.3 kDa)



Western blot analysis using SLC7A3 mAb against HEK293-6e (1) and SLC7A3 (AA: extra MIX)-hlgGfC transfected HEK293-6e (2) cell lysate.



Western blot analysis using SLC7A3 mouse mAb against HepG2 (1), A431 (2), SMMC-7721 (3) and A549 (4) cell lysate.



Flow cytometric analysis of HepG2 cells using SLC7A3 mouse mAb (green) and negative control (red).

Storage

Store at 4°C short term. Aliquot and store at -20°C long term.

501 Changsheng S Rd, Nanhu Dist, Jiaxing, Zhejiang, China

Tel: 86 21 31007137 | E-mail: save@bt-laboratory.com | www.bt-laboratory.com