

CK5 Monoclonal Antibody

Description

Product type	Antibody
Code	BT-MCA4619
Host	Mouse
Isotype	Mouse IgG1
Size	100µL, 50µL
Immunogen	Purified recombinant fragment of human CK5 (AA: 316-590) expressed in E. Coli.
Mol wt	62.4kDa
Species reactivity	Human
Clonality	Monoclonal
Recommended application	WB,IHC,FCM
Concentration	N/A
Full name	N/A
Synonyms	K5;KRT5;DDD;EBS2;KRT5A

This product is for research use only, not for use in human, therapeutic or diagnostic procedure.

Background

N/A

Recommended Dilution

WB: 1:500 - 1:2000

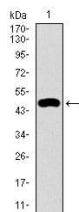
IHC-p: 1:200 - 1:1000

FCM: 1:200 - 1:400

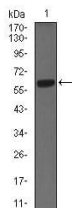
ELISA: 1:10000

Not yet tested in other applications.

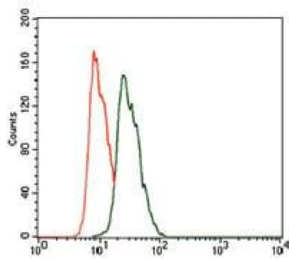
Images



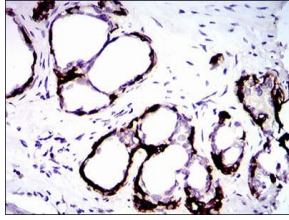
Western blot analysis using CK5 mAb against human CK5 recombinant protein. (Expected MW is 47.8 kDa)



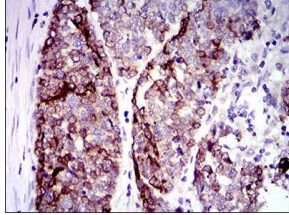
Western blot analysis using CK5 mouse mAb against A431 (1) cell lysate.



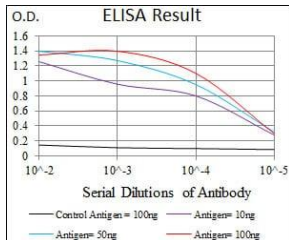
Flow cytometric analysis of HeLa cells using CK5 mouse mAb (green) and negative control (red).



Immunohistochemical analysis of paraffin-embedded prostate tissues using CK5 mouse mAb with DAB staining.



Immunohistochemical analysis of paraffin-embedded esophageal cancer tissues using CK5 mouse mAb with DAB staining.



Black line: Control Antigen (100 ng); Purple line: Antigen(10ng); Blue line: Antigen (50 ng); Red line: Antigen (100 ng);

Storage

Store at 4°C short term. Aliquot and store at -20°C long term.

501 Changsheng S Rd, Nanhu Dist, Jiaxing, Zhejiang, China

Tel: 86 21 31007137 | E-mail: save@bt-laboratory.com | www.bt-laboratory.com