

ATG16L1 Monoclonal Antibody

Description

Product type	Antibody
Code	BT-MCA4628
Host	Mouse
Isotype	Mouse IgG1
Size	100µL, 50µL
Immunogen	Purified recombinant fragment of human ATG16L1 (AA: 11-257) expressed in E. Coli.
Mol wt	68.3kDa
Species reactivity	Human,Mouse,Rat
Clonality	Monoclonal
Recommended application	WB,FCM
Concentration	N/A
Full name	N/A
Synonyms	IBD10;WDR30;APG16L;ATG16A;ATG16L

This product is for research use only, not for use in human, therapeutic or diagnostic procedure.

Background

N/A

Recommended Dilution

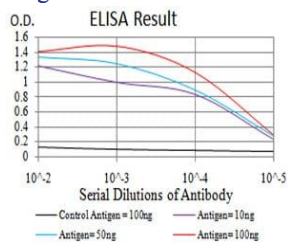
WB: 1:500 - 1:2000

FCM: 1:200 - 1:400

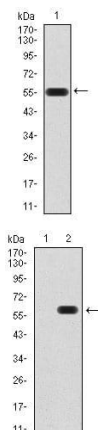
ELISA: 1:10000

Not yet tested in other applications.

Images

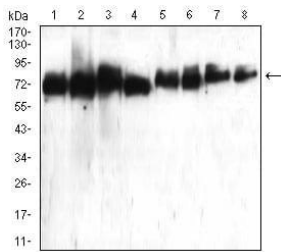


Black line: Control Antigen (100 ng); Purple line: Antigen(10ng); Blue line: Antigen (50 ng); Red line: Antigen (100 ng);

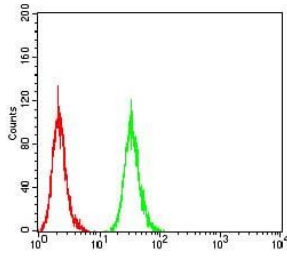


Western blot analysis using ATG16L1 mAb against human ATG16L1 (AA: 11-257) recombinant protein. (Expected MW is 55.8 kDa)

Western blot analysis using ATG16L1 mAb against HEK293 (1) and ATG16L1 (AA: 11-257)-hlgGfc transfected HEK293 (2) cell lysate.



Western blot analysis using ATG16L1 mouse mAb against HeLa (1), Raji (2), PANC-1 (3), Jurkat (4), PC-12 (5), HepG2 (6), Hek293 (7), and NIH3T3 (8) cell lysate.



Flow cytometric analysis of HeLa cells using ATG16L1 mouse mAb (green) and negative control (red).

Storage

Store at 4°C short term. Aliquot and store at -20°C long term.

501 Changsheng S Rd, Nanhu Dist, Jiaxing, Zhejiang, China

Tel: 86 21 31007137 | E-mail: save@bt-laboratory.com | www.bt-laboratory.com