

## CFLAR Monoclonal Antibody

### Description

|                                |  |
|--------------------------------|--|
| <b>Product type</b>            | Antibody   |
| <b>Code</b>                    | BT-MCA4632   |
| <b>Host</b>                    | Mouse  |
| <b>Isotype</b>                 | Mouse IgG1   |
| <b>Size</b>                    | 100µL, 50µL  |
| <b>Immunogen</b>               | Purified recombinant fragment of human CFLAR (AA: 100-251) expressed in E. Coli.                 |
| <b>Mol wt</b>                  | 55kDa  |
| <b>Species reactivity</b>      | Human,Mouse  |
| <b>Clonality</b>               | Monoclonal   |
| <b>Recommended application</b> | WB,IHC,FCM   |
| <b>Concentration</b>           | N/A  |
| <b>Full name</b>               | N/A  |
| <b>Synonyms</b>                | CASH;FLIP;MRIT;CLARP;FLAME;Casper;FLAME1;c-FLIP;FLAME-1;l-FLICE;c-FLIPL;c-FLIPR;c-FLIPS;CASP8AP1 |

This product is for research use only, not for use in human, therapeutic or diagnostic procedure.

### Background

N/A

### Recommended Dilution

WB: 1:500 - 1:2000

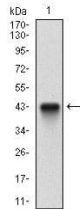
IHC-p: 1:200 - 1:1000

FCM: 1:200 - 1:400

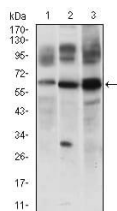
ELISA: 1:10000

Not yet tested in other applications.

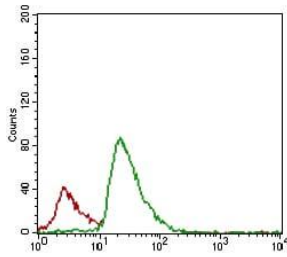
### Images



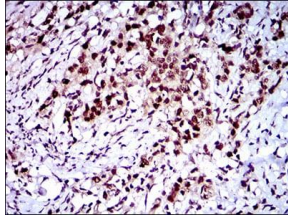
Western blot analysis using CFLAR mAb against human CFLAR recombinant protein. (Expected MW is 42.9 kDa)



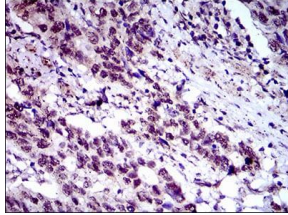
Western blot analysis using CFLAR mouse mAb against JURKAT (1), 3T3L1 (2) and RAJI (3) cell lysate.



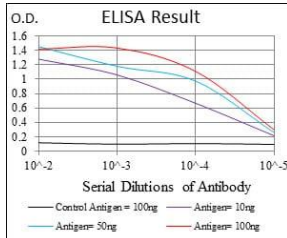
Flow cytometric analysis of JURKAT cells using CFLAR mouse mAb (green) and negative control (red).



Immunohistochemical analysis of paraffin-embedded cervical cancer tissues using CFLAR mouse mAb with DAB staining.



Immunohistochemical analysis of paraffin-embedded esophagus cancer tissues using CFLAR mouse mAb with DAB staining.



Black line: Control Antigen (100 ng); Purple line: Antigen(10ng); Blue line: Antigen (50 ng); Red line: Antigen (100 ng);

## Storage

Store at 4°C short term. Aliquot and store at -20°C long term.

501 Changsheng S Rd, Nanhu Dist, Jiaxing, Zhejiang, China

Tel: 86 21 31007137 | E-mail: save@bt-laboratory.com | www.bt-laboratory.com