

SATB2 Monoclonal Antibody

Description

Product type	Antibody
Code	BT-MCA4637
Host	Mouse
Isotype	Mouse IgG1
Size	100µL, 50µL
Immunogen	Purified recombinant fragment of human SATB2 (AA: 377-499) expressed in E. Coli.
Mol wt	82.6kDa
Species reactivity	Human
Clonality	Monoclonal
Recommended application	IHC,FCM
Concentration	N/A
Full name	N/A
Synonyms	GLSS

This product is for research use only, not for use in human, therapeutic or diagnostic procedure.

Background

This gene encodes a DNA binding protein that specifically binds nuclear matrix attachment regions. The encoded protein is involved in transcription regulation and chromatin remodeling. Defects in this gene are associated with isolated cleft palate and cognitive disability. Alternate splicing results in multiple transcript variants that encode the same protein. [provided by RefSeq, Feb 2010]

Recommended Dilution

WB: 1:500 - 1:2000

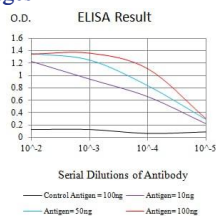
IHC-p: 1:200 - 1:1000

FCM: 1:200 - 1:400

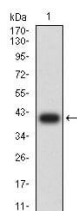
ELISA: 1:10000

Not yet tested in other applications.

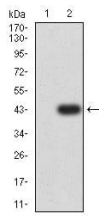
Images



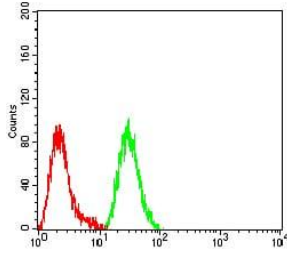
Black line: Control Antigen (100 ng);Purple line: Antigen (10ng); Blue line: Antigen (50 ng); Red line:Antigen (100 ng)



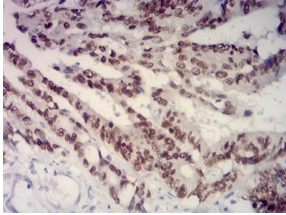
Western blot analysis using SATB2 mAb against human SATB2 (AA: 377-499) recombinant protein. (Expected MW is 39.7 kDa)



Western blot analysis using SATB2 mAb against HEK293 (1) and SATB2 (AA: 377-499)-hIgGFc transfected HEK293 (2) cell lysate.



Flow cytometric analysis of HeLa cells using SATB2 mouse mAb (green) and negative control (red).



Immunohistochemical analysis of paraffin-embedded colon cancer tissues using SATB2 mouse mAb with DAB staining.

Storage

Store at 4°C short term. Aliquot and store at -20°C long term.

501 Changsheng S Rd, Nanhu Dist, Jiaxing, Zhejiang, China

Tel: 86 21 31007137 | E-mail: save@bt-laboratory.com | www.bt-laboratory.com