

ZP2 Monoclonal Antibody

Description

Product type	Antibody
Code	BT-MCA4641
Host	Mouse
Isotype	Mouse IgG1
Size	100µL, 50µL
Immunogen	Purified recombinant fragment of human ZP2 (AA: 624-745) expressed in E. Coli.
Mol wt	82.3kDa
Species reactivity	Human,Mouse,Rat
Clonality	Monoclonal
Recommended application	IHC,FCM
Concentration	N/A
Full name	N/A
Synonyms	ZPA;Zp-2;OOMD6

This product is for research use only, not for use in human, therapeutic or diagnostic procedure.

Background

The zona pellucida is an extracellular matrix that surrounds the oocyte and early embryo. It is composed of three glycoproteins with various functions during fertilization and preimplantation development. The glycosylated mature peptide is one of the structural components of the zona pellucida and functions in secondary binding and penetration of acrosome-reacted spermatozoa. Female mice lacking this gene do not form a stable zona matrix and are sterile. Alternative splicing results in multiple transcript variants.

Recommended Dilution

WB: 1:500 - 1:2000

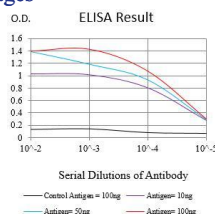
IHC-p: 1:200 - 1:1000

FCM: 1:200 - 1:400

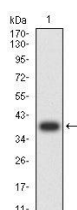
ELISA: 1:10000

Not yet tested in other applications.

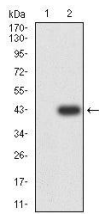
Images



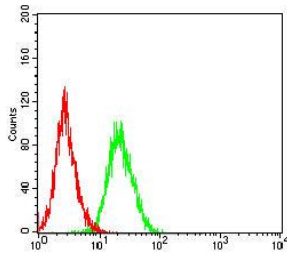
Black line: Control Antigen (100 ng);Purple line: Antigen (10ng); Blue line: Antigen (50 ng); Red line:Antigen (100 ng)



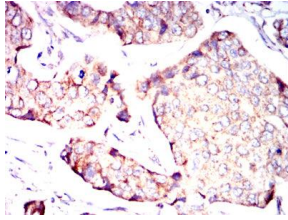
Western blot analysis using ZP2 mAb against human ZP2 (AA: 624-745) recombinant protein.
(Expected MW is 38.5 kDa)



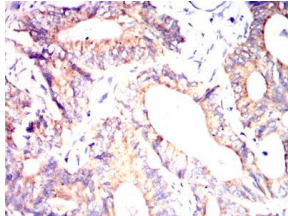
Western blot analysis using ZP2 mAb against HEK293-6e (1) and ZP2 (AA: 624-745)-hIgGFc transfected HEK293-6e (2) cell lysate.



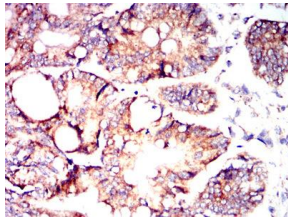
Flow cytometric analysis of Hela cells using ZP2 mouse mAb (green) and negative control (red).



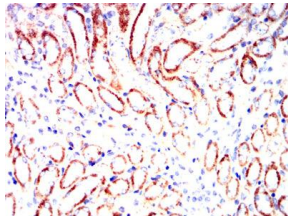
Immunohistochemical analysis of paraffin-embedded breast cancer tissues using ZP2 mouse mAb with DAB staining.



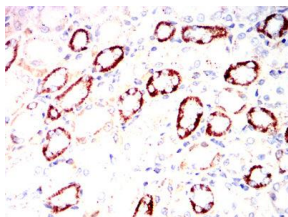
Immunohistochemical analysis of paraffin-embedded colon cancer tissues using ZP2 mouse mAb with DAB staining.



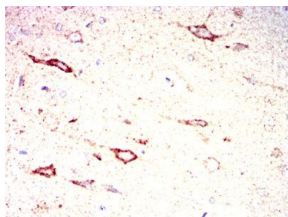
Immunohistochemical analysis of paraffin-embedded rectum cancer tissues using ZP2 mouse mAb with DAB staining.



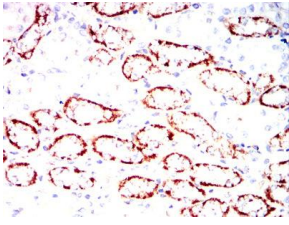
Immunohistochemical analysis of paraffin-embedded mouse kidney tissues using ZP2 mouse mAb with DAB staining.



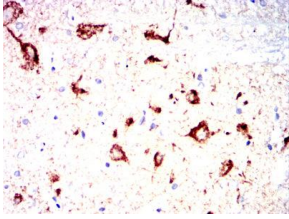
Immunohistochemical analysis of paraffin-embedded Rat kidney tissues using ZP2 mouse mAb with DAB staining.



Immunohistochemical analysis of paraffin-embedded Rat cerebrum tissues using ZP2 mouse mAb with DAB staining.



Immunohistochemical analysis of paraffin-embedded Rabbit kidney tissues using ZP2 mouse mAb with DAB staining.



Immunohistochemical analysis of paraffin-embedded Rabbit spinal cord tissues using ZP2 mouse mAb with DAB staining.

Storage

Store at 4°C short term. Aliquot and store at -20°C long term.

501 Changsheng S Rd, Nanhu Dist, Jiaxing, Zhejiang, China

Tel: 86 21 31007137 | E-mail: save@bt-laboratory.com | www.bt-laboratory.com