

CD8a Monoclonal Antibody

Description

Product type	Antibody
Code	BT-MCA4643
Host	Mouse
Isotype	Mouse IgG1
Size	100µL, 50µL
Immunogen	Purified recombinant fragment of human CD8a (AA: 22–235) expressed in E. Coli.
Mol wt	25.7kDa
Species reactivity	Others
Clonality	Monoclonal
Recommended application	WB,FCM
Concentration	N/A
Full name	N/A
Synonyms	CD8;p32;Leu2

This product is for research use only, not for use in human, therapeutic or diagnostic procedure.

Background

The CD8 antigen is a cell surface glycoprotein found on most cytotoxic T lymphocytes that mediates efficient cell-cell interactions within the immune system. The CD8 antigen acts as a coreceptor with the T-cell receptor on the T lymphocyte to recognize antigens displayed by an antigen presenting cell in the context of class I MHC molecules. The coreceptor functions as either a homodimer composed of two alpha chains or as a heterodimer composed of one alpha and one beta chain. Both alpha and beta chains share significant homology to immunoglobulin variable light chains. This gene encodes the CD8 alpha chain. Multiple transcript variants encoding different isoforms have been found for this gene.

Recommended Dilution

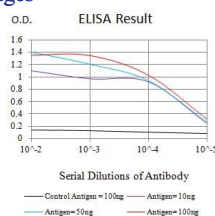
WB: 1:500 - 1:2000

FCM: 1:200 - 1:400

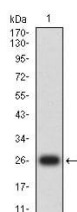
ELISA: 1:10000

Not yet tested in other applications.

Images

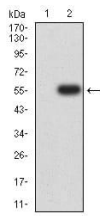


Black line: Control Antigen (100 ng);Purple line: Antigen (10ng); Blue line: Antigen (50 ng); Red line:Antigen (100 ng)

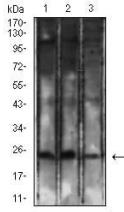


Western blot analysis using CD8a mAb against human CD8a (AA: 22–235) recombinant protein.

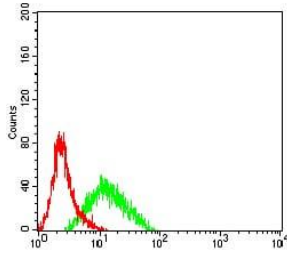
(Expected MW is 26.4 kDa)



Western blot analysis using CD8a mAb against HEK293 (1) and CD8a (AA: 22-235)-hlgGFc transfected HEK293 (2) cell lysate.



Western blot analysis using CD8a mouse mAb against K562 (1), Jurkat (2), and HL-60 (3) cell lysate.



Flow cytometric analysis of HeLa cells using CD8a mouse mAb (green) and negative control (red).

Storage

Store at 4°C short term. Aliquot and store at -20°C long term.

501 Changsheng S Rd, Nanhu Dist, Jiaxing, Zhejiang, China

Tel: 86 21 31007137 | E-mail: save@bt-laboratory.com | www.bt-laboratory.com